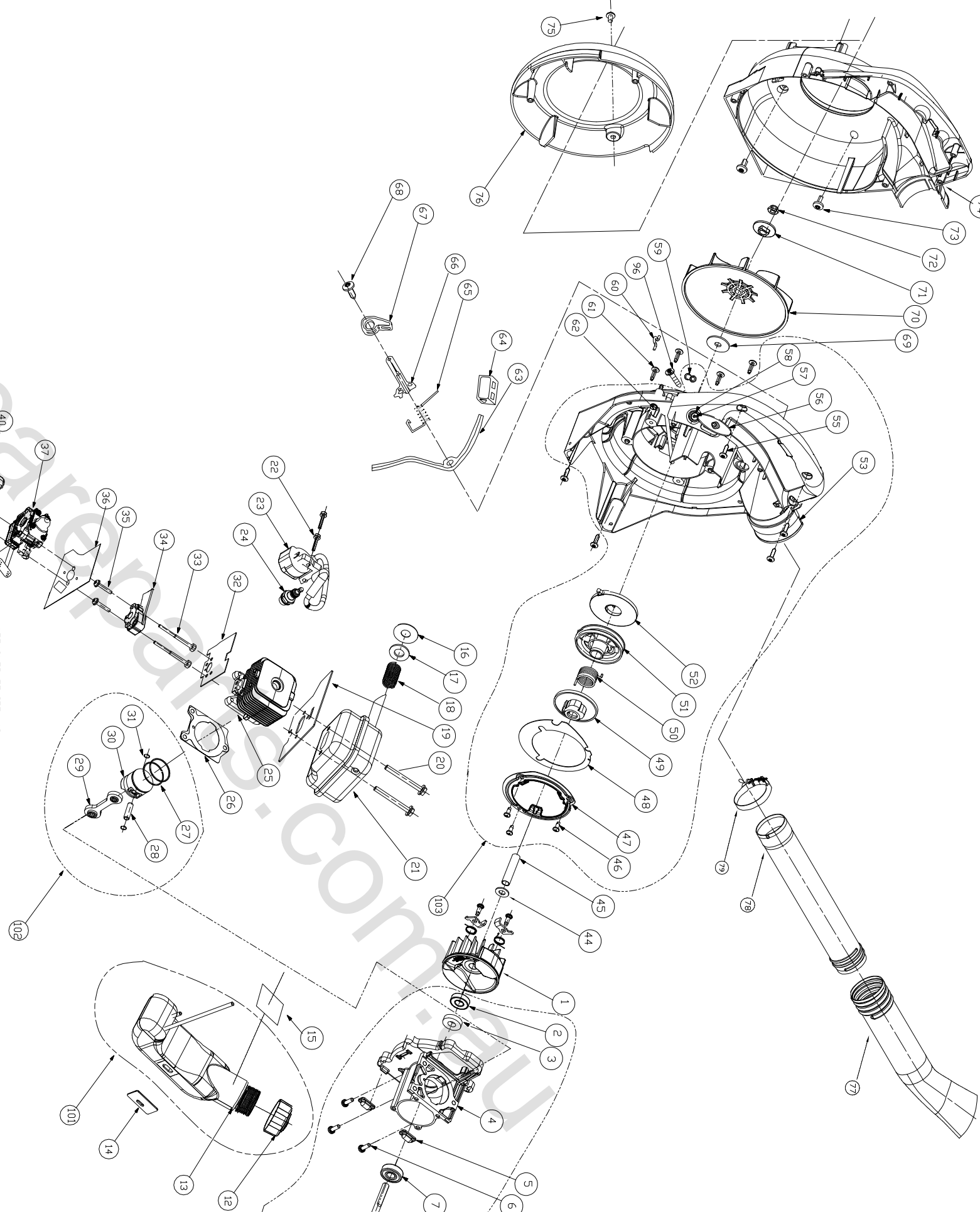


REV	ZONE	DESCRIPTION	ECR	CHECKED
00		RELEASED TO PRODUCTION	xxxxxx	xxxxxx
COMPUTERIZED DOCUMENT				
NO MANUAL REVISIONS PERMITTED				

65	638075001	THR. SPRING\ 00370	1	1
66	518082001	LATCH, LEVER\ 983864001	1	1
67	518080001	KNOB, THROTTLE CONTROL\ 9838856001	1	1
68	660618001	ST. SCREW, STEEL, 10-14X1/2" TORX\ 82541	1	1
69	650017001	WASHER FLAT\PS0268	1	1
70	518077001	FAN, PS02931	1	1
71	640858001	FAN ADAPTER, V085S15	1	1
72	66073001	NUT, HEX NYLON, LOCK 1/4"-20, BLK. DIXIE\ 985738	1	1
73	660618001	SCREW, 10-14X1/2"-82541	2	1
74	518076001	VOLUME, DUTER\ 985234002	1	1
75	660618001	SCREW, 1/4"-20X3/4\617295001	1	1
76	518078001	DOOR, 985239001	1	1
77	580556001	NOZZLE, SWEEPER\ 983913001	1	1
78	580555001	UPPER TUBE\ 983916001	1	1
79	348035001	CAMP, V083296001	1	1
80	518079001	SHROUD, BLOWER\985548	1	1
81	660619001	SCREW, GRK\ 82376	3	1

64	518081001	FRIDGER\PKG. \ 00367	1	1
63	638028001	LEVER, THROTTLE\ 00384	1	1
62	660734001	SCREW, 983638	1	1
61	660630001	ST. SCREW, #10-24X3	4	1
60	638074001	CMP. WIRE\ 00398	1	1
59	660670001	SCREW, PHILLIPS, HD \ PS02746	1	1
58	650013001	BUSHING, STARTER-ROPE\ 008648	1	1
57	900849004	46" STARTER ROPE	1	1
56	650014001	BUSHING, (ST155)\V959811A	1	1
55	518073001	STARTER GRIP, (RYDB)\ YELL.DV\V946702	1	1
54	660629001	ST. SCREW, STEEL, #10-14X3\ 82563	6	1
53	518074001	PLASTIC, INNER VOLUME\ 985239001	1	1
52	638033001	SPRING, (ACM)\R\ 989723A	1	1
51	518075001	REEL, V085309001	1	1
50	638076001	DAMP. SPRING\ 98482001	1	1
49	900967001	GM. PLATE\ 984819	1	1
48	900957001	BATTLE GASKET\ V08561001	1	1
47	638032001	BATTLE\PS02864	1	1
46	660619001	SCREW\PKG\ 82376	3	1
45	650018001	SPACER, 985567	1	1
44	650016001	WASHER PLATE\ 03165	1	1
43	518072001	AIR FILTER COVER \ 00128	1	1
42	900952001	AIR FILTER, 98760	1	1
41	678027001	NUT, #10-24\ 81208	2	1
40	518071001	PLASTIC FILTER BOX\ 09217	1	1
39	570259001	TUBING RUBBER, 10439	076M	1
38	518086001	FITTING, INLINE FUEL\ 985304001	1	1
37	308117002	CARBURETOR, ZAMA\ 9856609	1	1
36	900951001	DESTRET, CARBURETOR\ 985279001	1	1
35	660662001	PAN, HEAD SENS. SCREW\ V092821	2	1
34	518070001	HEAT DAM, 98768A	2	1
33	660346002	CARB. BDL, T\ 04474	1	1
32	900950001	#H/D GASKET\ (GBR)\ V\ 0075A	1	1
31	650009001	RING, RETAINING/ 65261	2	1
30	640831001	PISTON, W.PINS, 30CC\ 984376	1	1
29	308147002	CONNECTING ROD, V\ 8A00190	1	1
28	650008001	PIN, PISTON\ 00238A	1	1
27	678061001	PISTON RING, 30CC\ 9896607	2	1
26	900953001	CYL. GASKET\ (KG)\ V\ 985299001	1	1
25	640841008	30CC, 13 FIN. CYLINDER\ 985554	1	1
24	870174001	SPARK PLUG, V\ PS002827	1	1
23	308064001	IGNITION COIL, CHINA, 35CC, KILL	1	1
22	660660001	SCREW, THD FORMING \ 82540	2	1
21	308122001	MUFFLER, 983995	1	1
20	660673001	SCREW-HEX, 10-24\ 88060	2	1
19	900949001	MUFFLER GASKET\ V\ 9838991	1	1
18	678044001	COMPRESSION SPRING, 00387	1	1
17	678045001	FLAT WASHER\ 941107	1	1
16	678046001	INSULATING WASHER\ 00381	1	1
15	900955001	HEAT SH\ 08684E\ LD	1	1
14	570549001	RUBBER, BUMPER, V085767	1	1
13	308131001	FUEL TANK ASSY, 983315001	1	1
12	308132001	FUEL CAP ASSY\ 98521001	1	1
11	6606654001	PAD HEAD SCREW\ PS01565	4	1
10	638031001	CRANKCASE COVER\ V\ S02130	1	1
9	900954001	GASKET, C/C COVER\ 06443A	1	1
8	308121001	CRANKSHAFT\ 985516001	1	1
7	671089001	BALL BEARING, STEEL, VID 12X32X10\ V\ 08338\ V\ 671089001	1	1
6	6606653001	#12-24 TORX PAN HEAD	3	1
5	570256001	BUMPER, 98792	2	1
4	640792003	CASTING, ALICID, CRANKCASE, HALF, CRANK, HT, MA	1	1
3	650012001	SHAFT, SEAL, ST155-385, 988800	1	1
2	650011001	BEARING, BALL, 066806	1	1
1	300952002	FLY WHEEL ASSY\ P\ 00634	1	1



NOTES:
ITEM NOT INCLUDED:
-GASOLINE
-501 ENGINE OIL
-PACKAGE MATERIAL

100	000998204	CRANKCASE & CRANKSHAFT ASSY	1	1
101	308123001	FUEL TANK & FUEL CAP ASSY\ 988276001	1	1
102	000998206	CONNECTING ROD & PISTON ASSY	1	1
103	000998208	INNER HOUSING & STARTER ASSY\ VCE 2004	1	1

ITEM	Part No.	Description	Qty.
1	300952002	FLY WHEEL ASSY\ P\ 00634	1
2	650011001	BEARING, BALL, 066806	1
3	650012001	SHAFT, SEAL, ST155-385, 988800	1
4	640792003	CASTING, ALICID, CRANKCASE, HALF, CRANK, HT, MA	1
5	570256001	BUMPER, 98792	2
6	6606653001	#12-24 TORX PAN HEAD	3
7	671089001	BALL BEARING, STEEL, VID 12X32X10\ V\ 08338\ V\ 671089001	1
8	308121001	CRANKSHAFT\ 985516001	1
9	900954001	GASKET, C/C COVER\ 06443A	1
10	638031001	CRANKCASE COVER\ V\ S02130	1
11	6606654001	PAD HEAD SCREW\ PS01565	4
12	308132001	FUEL CAP ASSY\ 98521001	1
13	308131001	FUEL TANK ASSY, 983315001	1
14	570549001	RUBBER, BUMPER, V085767	1
15	900955001	HEAT SH\ 08684E\ LD	1
16	678046001	INSULATING WASHER\ 00381	1
17	678045001	FLAT WASHER\ 941107	1
18	678044001	COMPRESSION SPRING, 00387	1
19	900949001	MUFFLER GASKET\ V\ 9838991	1
20	660673001	SCREW-HEX, 10-24\ 88060	2
21	308122001	MUFFLER, 983995	1
22	660660001	SCREW, THD FORMING \ 82540	2
23	308064001	IGNITION COIL, CHINA, 35CC, KILL	1
24	870174001	SPARK PLUG, V\ PS002827	1
25	640841008	30CC, 13 FIN. CYLINDER\ 985554	1
26	900953001	CYL. GASKET\ (KG)\ V\ 985299001	1
27	678061001	PISTON RING, 30CC\ 9896607	2
28	650008001	PIN, PISTON\ 00238A	1
29	308147002	CONNECTING ROD, V\ 8A00190	1
30	640831001	PISTON, W.PINS, 30CC\ 984376	1
31	650009001	RING, RETAINING/ 65261	2
32	900950001	#H/D GASKET\ (GBR)\ V\ 0075A	1
33	660346002	CARB. BDL, T\ 04474	1
34	518070001	HEAT DAM, 98768A	2
35	660662001	PAN, HEAD SENS. SCREW\ V092821	2
36	900951001	DESTRET, CARBURETOR\ 985279001	1
37	308117002	CARBURETOR, ZAMA\ 9856609	1
38	518086001	FITTING, INLINE FUEL\ 985304001	1
39	570259001	TUBING RUBBER, 10439	076M
40	518071001	PLASTIC FILTER BOX\ 09217	1
41	900952001	AIR FILTER, 98760	1
42	900952001	AIR FILTER COVER \ 00128	1
43	518072001	NUT, #10-24\ 81208	2
44	650016001	WASHER PLATE\ 03165	1
45	650018001	SPACER, 985567	1
46	660619001	SCREW\ PKG\ 82376	3
47	638032001	BATTLE\ PS02864	1
48	900957001	BATTLE GASKET\ V08561001	1
49	900967001	GM. PLATE\ 984819	1
50	638076001	DAMP. SPRING\ 98482001	1
51	518075001	REEL, V085309001	1
52	638033001	SPRING, (ACM)\ R\ 989723A	1
53	518074001	PLASTIC, INNER VOLUME\ 985239001	1
54	660629001	ST. SCREW, STEEL, #10-14X3\ 82563	6
55	518073001	STARTER GRIP, (RYDB)\ YELL.DV\ V946702	1
56	650014001	BUSHING, (ST155)\ V959811A	1
57	900849004	46" STARTER ROPE	1
58	650013001	BUSHING, STARTER-ROPE\ 008648	1
59	660670001	SCREW, PHILLIPS, HD \ PS02746	1
60	638074001	CMP. WIRE\ 00398	1
61	660630001	ST. SCREW, #10-24X3	4
62	660734001	SCREW, 983638	1
63	638028001	LEVER, THROTTLE\ 00384	1
64	518081001	FRIDGER\ PKG. \ 00367	1

UNLESS OTHERWISE SPECIFIED, DIMENSIONS ARE IN MILLIMETERS.
FOR ALL UNSPECIFIED DIMENSIONS, REFER TO THE CAD FILE.
DO NOT SCALE.
DIMENSIONS SHOWN IN SET BOM
DATE: 08/07/2005
DRAWN BY: CCKCHU
DATE: 08/07/2005
APPROVED BY: XXXX
DATE: XXXX
30CC YARD BROOM ASSEMBLY
DRAWING NUMBER: UT09510 (090050001)
SCALE: 3/8"
SHEET 1 OF 1

HOME LITE COLTD
2004 YARD BROOM
30CC YARD BROOM ASSEMBLY
DRAWING NUMBER
UT09510 (090050001)
SCALE 3/8"
SHEET 1 OF 1

A

B

C

D