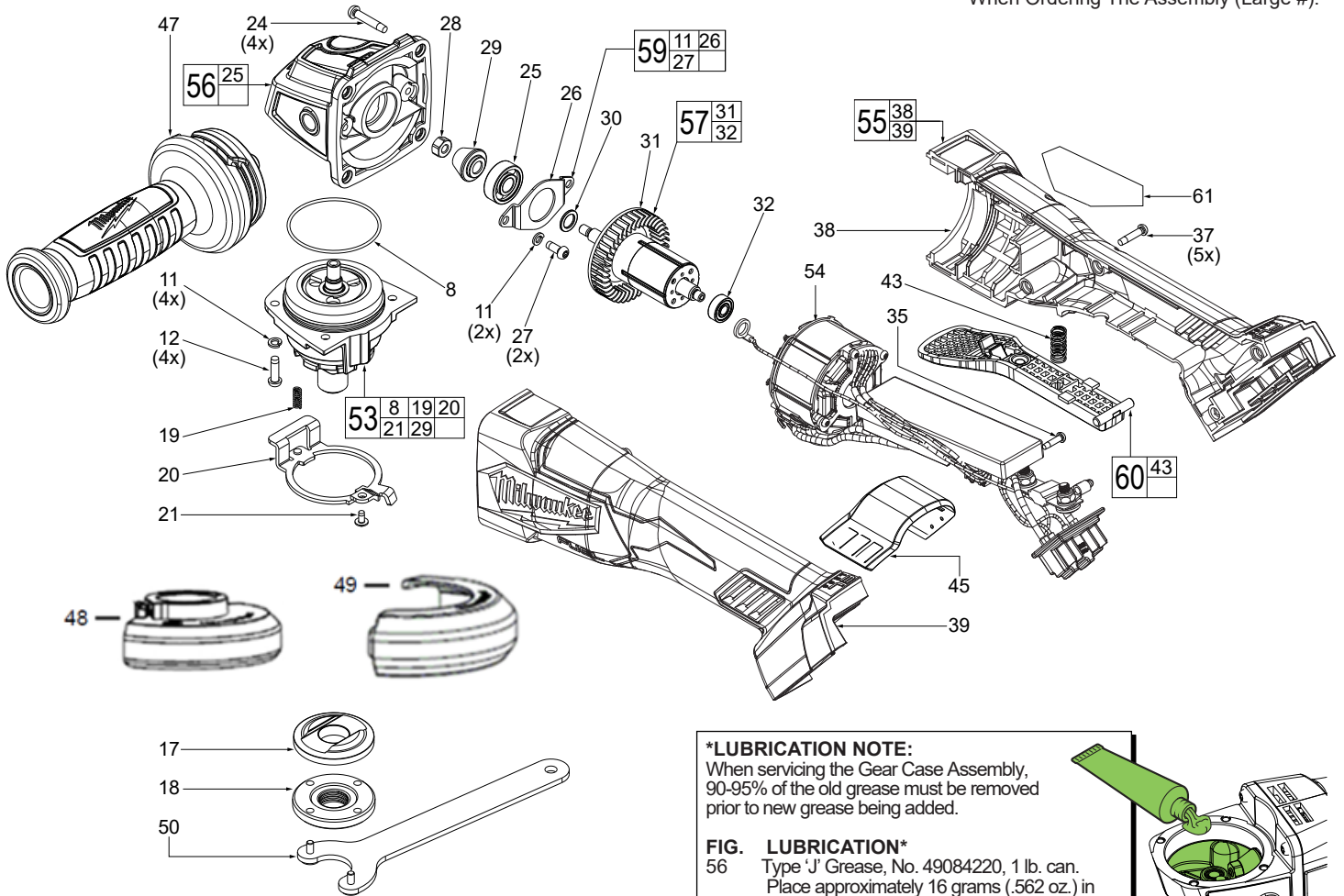




SERVICE PARTS LIST

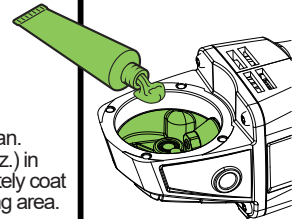
SPECIFY MODEL NO. AND SERIAL NO. WHEN ORDERING PARTS		REVISED BULLETIN	DATE
M18 FUEL™ 125mm Angle Grinder			Jan. 2021
MODEL NO. M18FAG125XPD-0	2880-20	WIRING INSTRUCTION SEE PAGE 2	

EXAMPLE:
 Component Parts (Small #) Are Included
 When Ordering The Assembly (Large #).

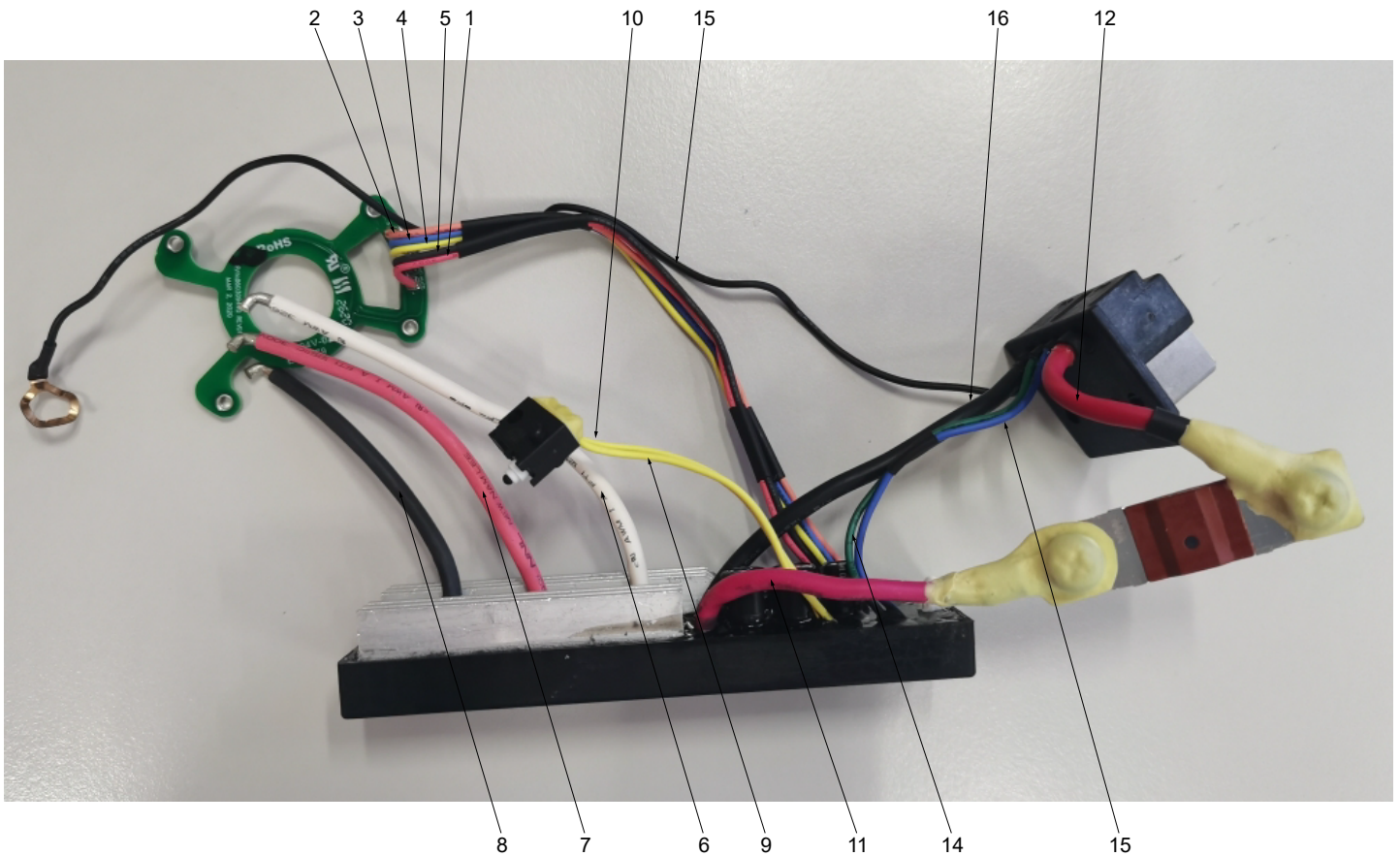


***LUBRICATION NOTE:**
 When servicing the Gear Case Assembly, 90-95% of the old grease must be removed prior to new grease being added.

FIG. LUBRICATION*
 56 Type 'J' Grease, No. 49084220, 1 lb. can. Place approximately 16 grams (.562 oz.) in gearcase cavity, being sure to completely coat all teeth of bevel pinion and surrounding area.



WIRE ROUTING AND TRAPPING for the ELECTRONICS KIT in the HANDLE SUPPORT (Left Handle Halve)



- | | | | |
|-----------|--|------------|--|
| 1. Red | Connect with Power Control Board and Hall Board. | 9. Yellow | Connect with Switch and Power Control Board. |
| 2. Orange | Connect with Power Control Board and Hall Board. | 10. Yellow | Connect with Switch and Power Control Board. |
| 3. Blue | Connect with Power Control Board and Hall Board. | 11. Red | Connect with Power Control Board and Fuse 1. |
| 4. Yellow | Connect with Power Control Board and Hall Board. | 12. Red | Connect with Terminal Block and Fuse 2. |
| 5. Black | Connect with Power Control Board and Hall Board. | 13. Blue | Connect with Power Control Board and Terminal Block. |
| 6. White | Connect with Power Control Board and Hall Motor. | 14. Green | Connect with Power Control Board and Terminal Block. |
| 7. Red | Connect with Power Control Board and Hall Motor. | 15. Black | Connect with Gearcase and Terminal Block. |
| 8. Black | Connect with Power Control Board and Hall Motor. | 16. Black | Connect with Power Control Board and Terminal Block. |