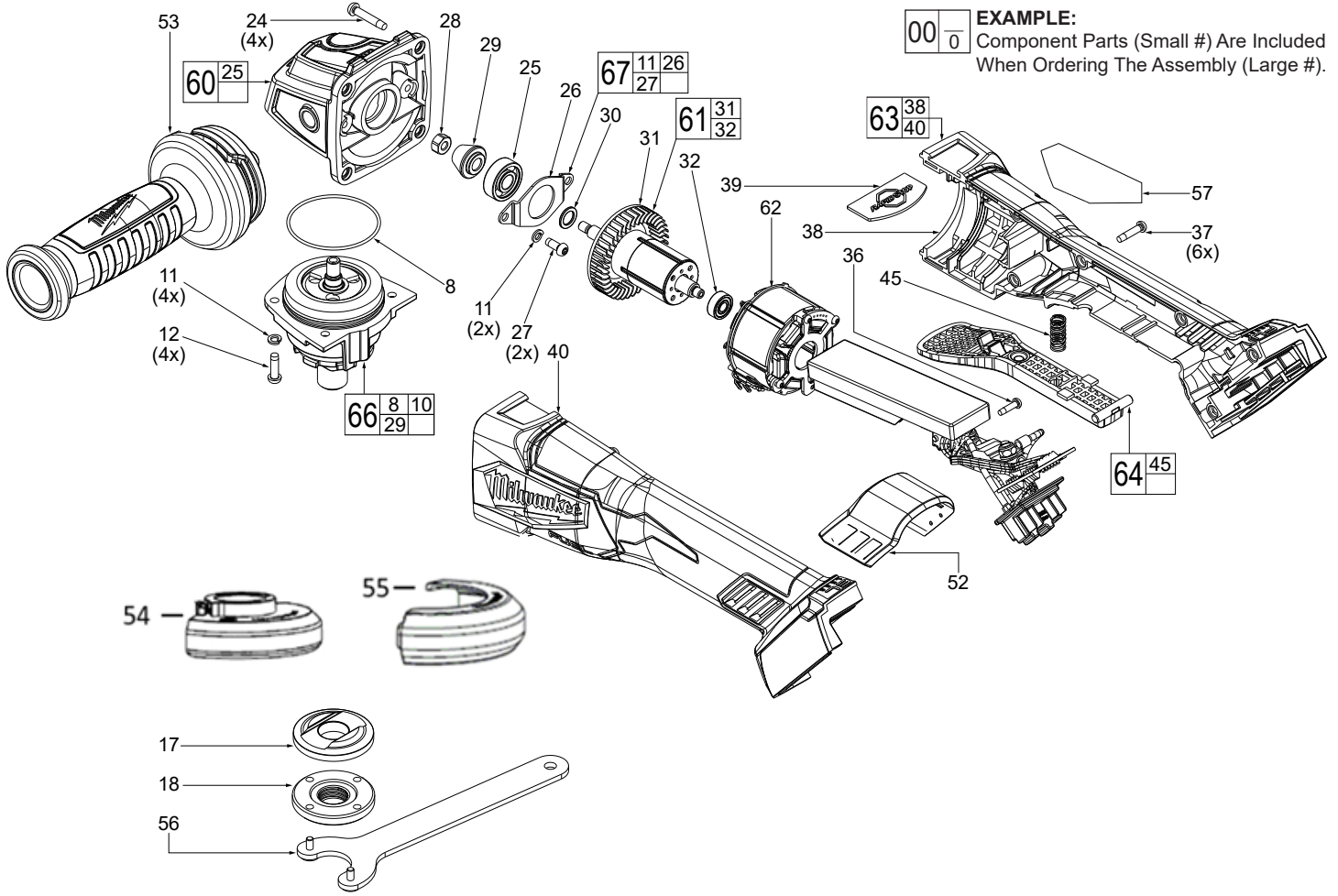




SERVICE PARTS LIST

SPECIFY MODEL NO. AND SERIAL NO. WHEN ORDERING PARTS		REVISED BULLETIN	DATE
M18 FUEL™ 125mm Braking Angle Grinder			Mar. 2021
MODEL NO. M18FAG125XPDB-0	2882-20	WIRING INSTRUCTION SEE PAGE 2	



EXAMPLE:
 00 0 Component Parts (Small #) Are Included
 When Ordering The Assembly (Large #).

***LUBRICATION NOTE:**
 When servicing the Gear Case Assembly,
 90-95% of the old grease must be removed
 prior to new grease being added.

FIG. LUBRICATION*
 56 Type 'J' Grease, No. 49084220, 1 lb. can.
 Place approximately 16 grams (.562 oz.) in
 gearcase cavity, being sure to completely coat
 all teeth of bevel pinion and surrounding area.

