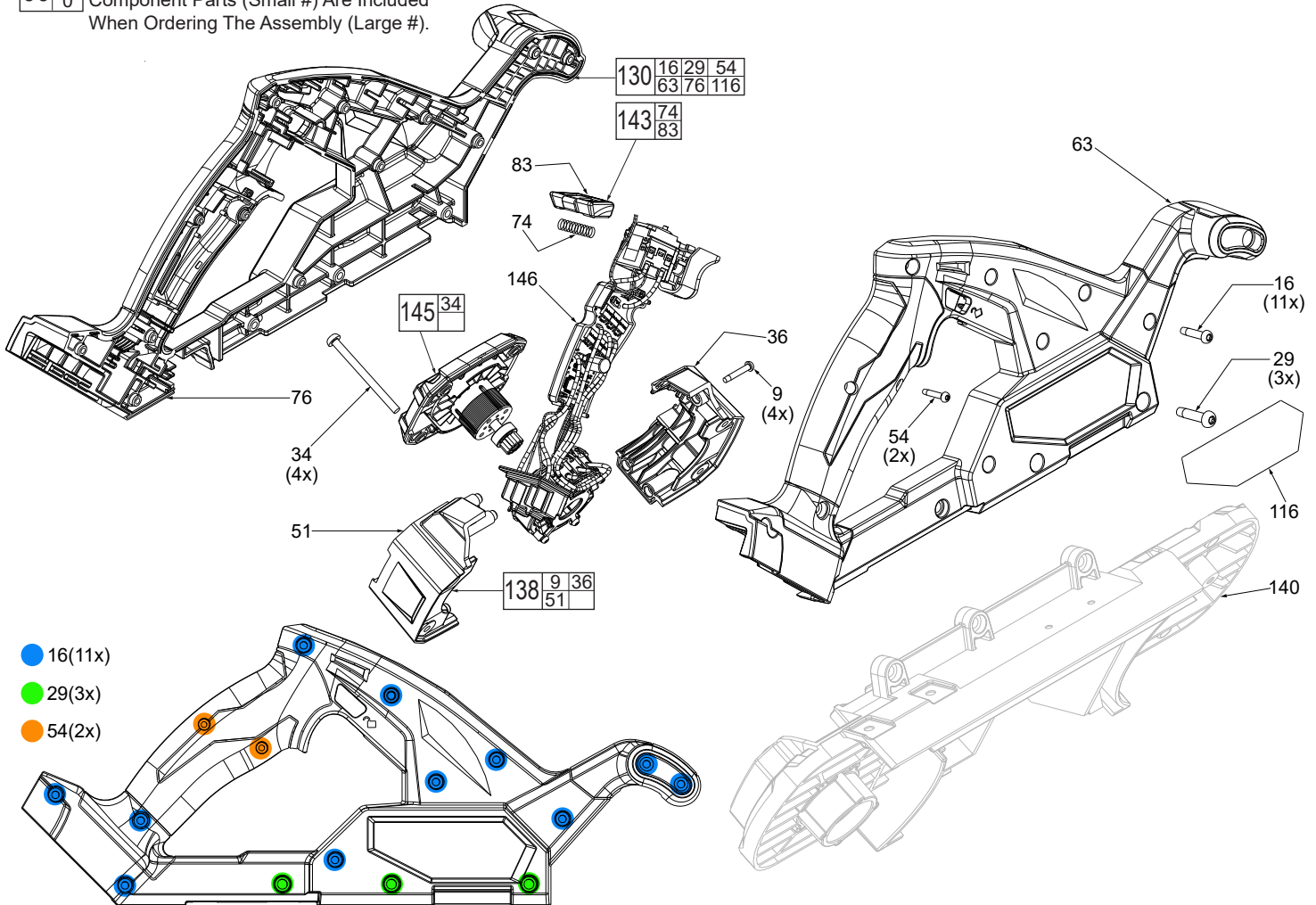




SERVICE PARTS LIST

SPECIFY MODEL NO. AND SERIAL NO. WHEN ORDERING PARTS		REVISED BULLETIN	DATE
M18 FUEL™ Compact Bandsaw			Jan. 2020
MODEL NO.	M18FBS85-0	2829-20	WIRING INSTRUCTION See Page 3

EXAMPLE:
 00 0 Component Parts (Small #) Are Included
 When Ordering The Assembly (Large #).



SCREW TORQUE SPECIFICATIONS			
FIG.	WHERE USED	SEAT TORQUE	
		(KG/CM)	(IN/LBS)
1	LED/LED Housing	5-7	4-6
6	Rafter Hook Kit	8-10	7-8
9	Motor Cover - Left	8-10	7-8
16	Right Housing Halve	20-23	17-20
26	Gearbox Kit	7-9	6-8
27	LED Housing	5-7	4-6
28	Output Shaft Ret. Plate	14-21	12-18
29	Right Housing Halve	27-33	23-28
31	Guide Roller Kits	31-37	27-32
34	Rotor/Cap Kit	17-22	14-19
43	Front and Rear Shroud	29-34	25-29
48	Tensioning Mechanism	20-25	17-21
49	Tire Clean Brush Cover	19-25	16-21
54	Right Housing Halve	6-9	5-8
61	Shoe Kit	36-44	31-38
70	Tensioning Mechanism	80-120	69-104
79	Front and Rear Pulley	85-95	73-82
81	Tension Lever	25-30	21-26

As an aid to reassembly, take notice of wire routings and position in wire guides and traps while dismantling tool.

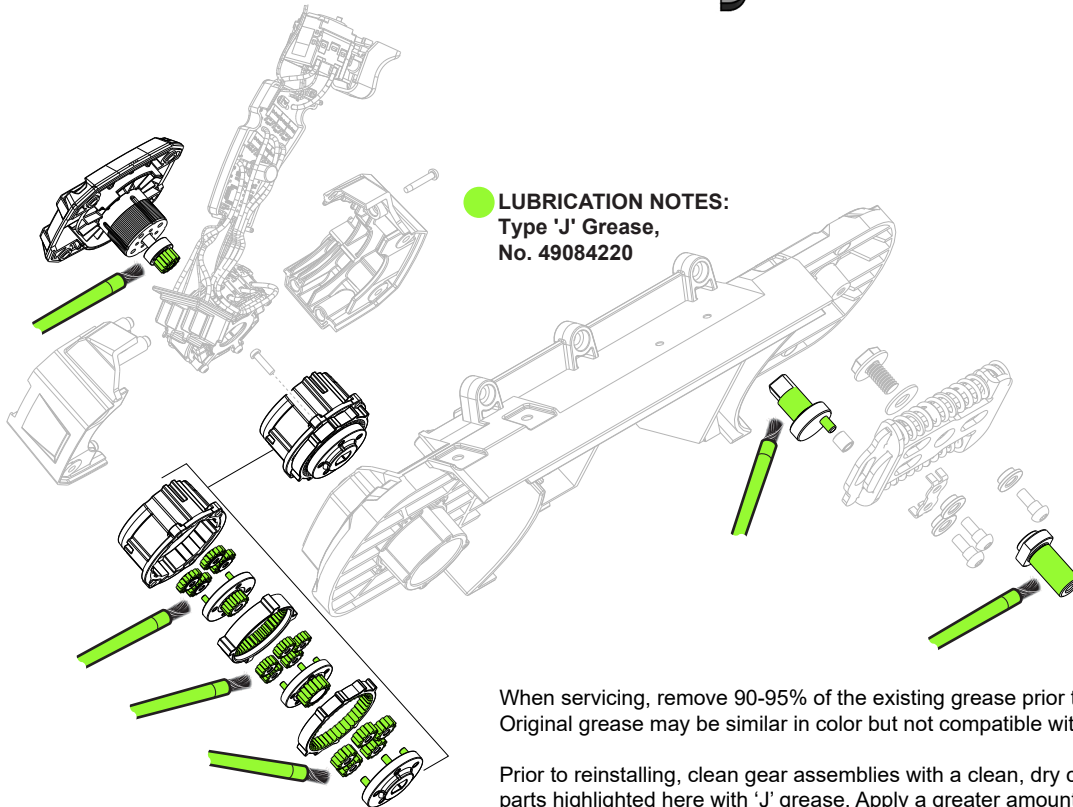
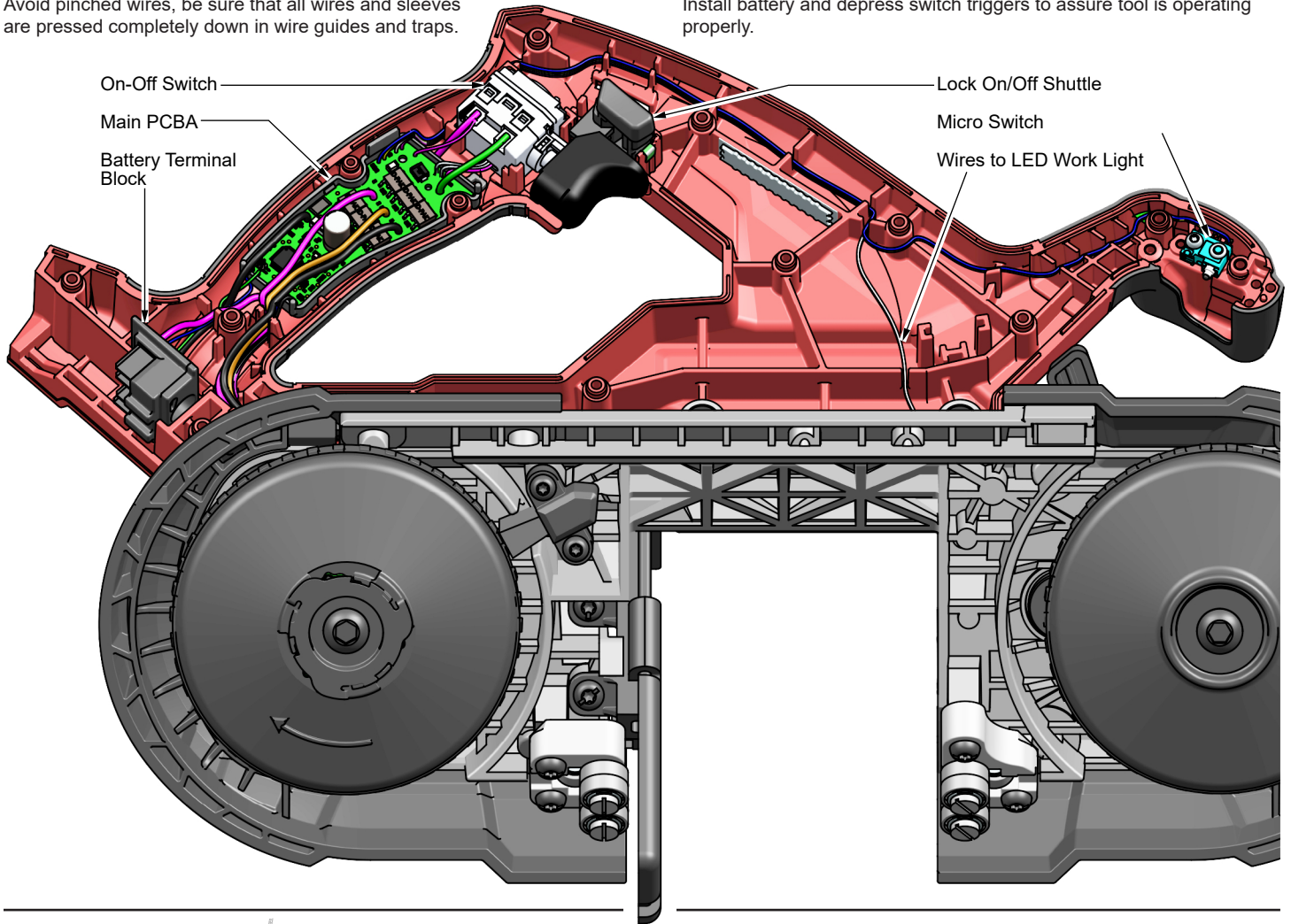
Be sure that all components of the electronics kit are seated firmly and squarely in the housing recesses.

Avoid pinched wires, be sure that all wires and sleeves are pressed completely down in wire guides and traps.

Prior to securing the housing cover onto the housing support, be sure that there are no interferences.

Before installing the battery, check for proper functionality of shuttle and triggers.

Install battery and depress switch triggers to assure tool is operating properly.



When servicing, remove 90-95% of the existing grease prior to installing Type 'J'. Original grease may be similar in color but not compatible with 'J'.

Prior to reinstalling, clean gear assemblies with a clean, dry cloth. Lightly coat all parts highlighted here with 'J' grease. Apply a greater amount of grease to all gear teeth.