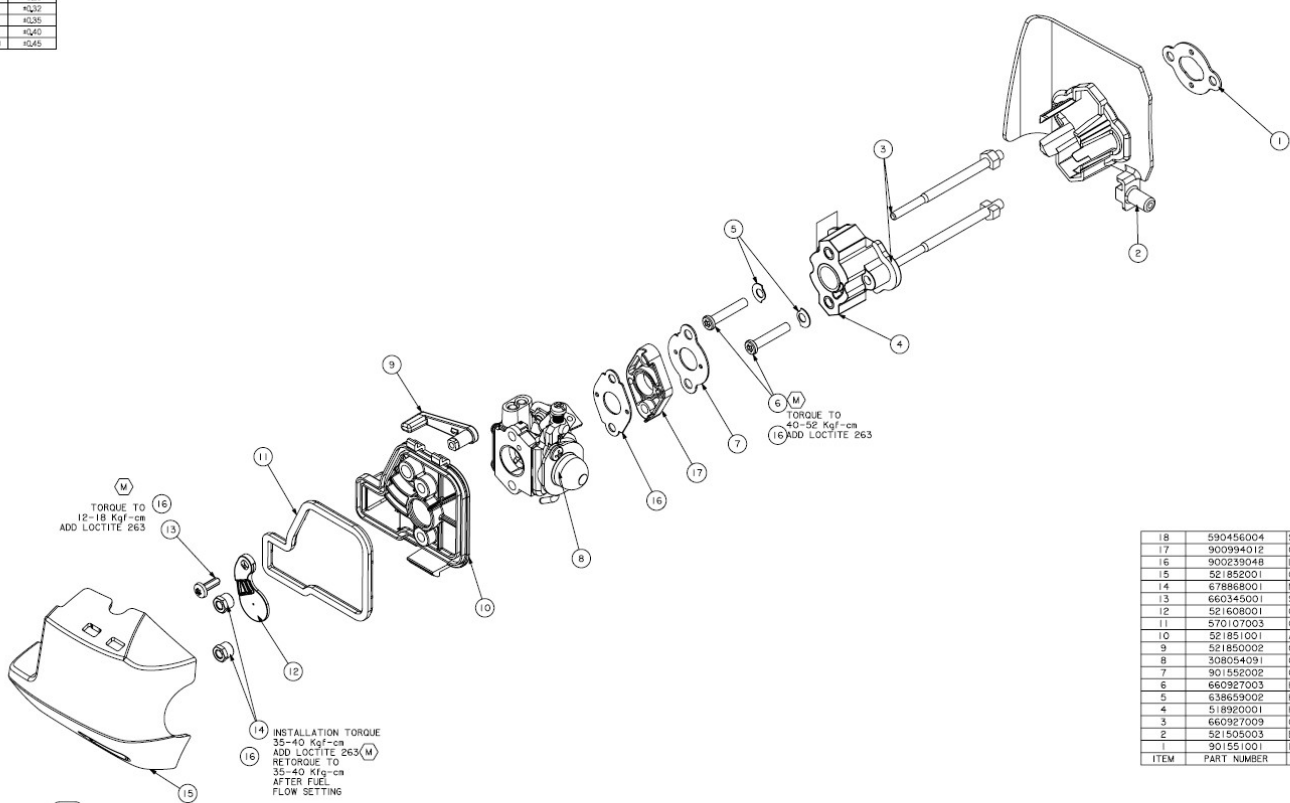


STANDARD TOLERANCE GRADES	
DIMENSION RANGE	IT 12
0-3	+0.05
3-6	+0.06
6-10	+0.08
10-15	+0.10
15-20	+0.12
20-30	+0.15
30-40	+0.18
40-50	+0.20
50-60	+0.25
60-70	+0.30
70-80	+0.35
80-90	+0.40
90-100	+0.45

REV	CHANGE DESCRIPTION	ZONE	EC #	DATE	APV BY



(M) TORQUE TO 12-18 Kgf-cm  
ADD LOCTITE 263

(M) INSTALLATION TORQUE 35-40 Kgf-cm  
ADD LOCTITE 263 (M)  
RETORQUE TO 35-40 Kgf-cm  
AFTER FUEL FLOW SETTING

(M) TORQUE TO 10-32 Kgf-cm  
(16) ADD LOCTITE 263

18	590456004	SPACER-PLASTIC	1
17	900994012	GASKE T, CARBURETOR	1
16	900293048	LOCTITE 263	1
15	521858001	COVER-AIR BOX	1
14	678868001	NUT - HEX. MS. X. O.B	2
13	660345001	SCREW, PAN HD	1
12	521608001	CHOKE PLATE	1
11	570107003	GASKE T, AIRBOX	1
10	521851001	AIR BOX BASE	1
9	521850002	CHOKE LEVER	1
8	308054091	CARBURETOR, H142A	1
7	901552002	GASKE T, CARB	1
6	660927003	HEAT DAM MOUNTING BOLT	2
5	638659002	HEAT DAM WASHER	2
4	518920001	HEAT DAM	1
3	660927009	CARB BOLT MSXO.8	2
2	521505003	BAFFLE PLATE, PLASTIC	1
1	901551001	INNER HEAT DAM GASKET	1
ITEM	PART NUMBER	DESCRIPTION	QTY

- NOTES: (1)
- REFER TO COMPONENT DRAWING FOR INSPECTION CRITERIA
  - SEE QUALITY ASSURANCE FOR ADDRESSING CRITICAL AND MAJOR DIMENSIONS
- TOTAL (C) THIS PAGE = 0  
TOTAL (M) THIS PAGE = 4

**Techtronic Industries Co. Ltd.** 308054095

CONFIDENTIAL

**DRAFT 1**  
21/05/14

308054095  
26cc HOMELITE CARB ASSY

CL00003823