



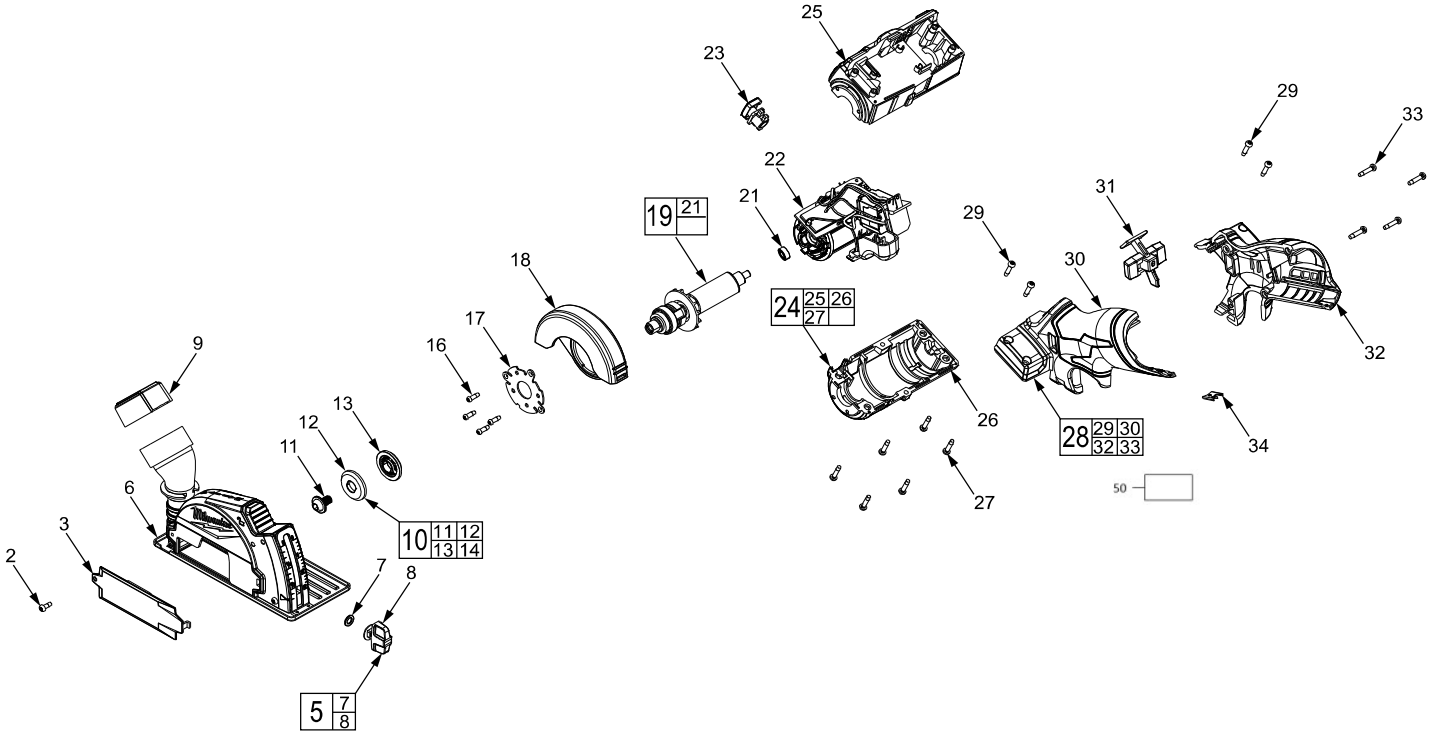
# SERVICE PARTS LIST

SPECIFY CATALOG NO. AND SERIAL NO. WHEN ORDERING PARTS		REVISED BULLETIN	DATE
<b>M12™ FUEL™ 3" COMPACT CUT OFF TOOL</b>			Mar. 2018
MODEL NO. M12FCOT-0	<b>2522-20</b>	WIRING INSTRUCTION	

**EXAMPLE:**  

00	0
----	---

 Component Parts (Small #)  
 Are Included When Ordering  
 The Assembly (Large #).



**FIG. NOTES**

36, 37 A clean, dry surface is essential for proper performance for any  
 38, 39 adhesive system. The area intended for application of any  
 adhesive label or nameplate must be prepared by cleaning with  
 isopropyl alcohol. The solvent is to be applied with a clean, lint  
 free applicator and the surface allowed to dry before applying the  
 label or nameplate.