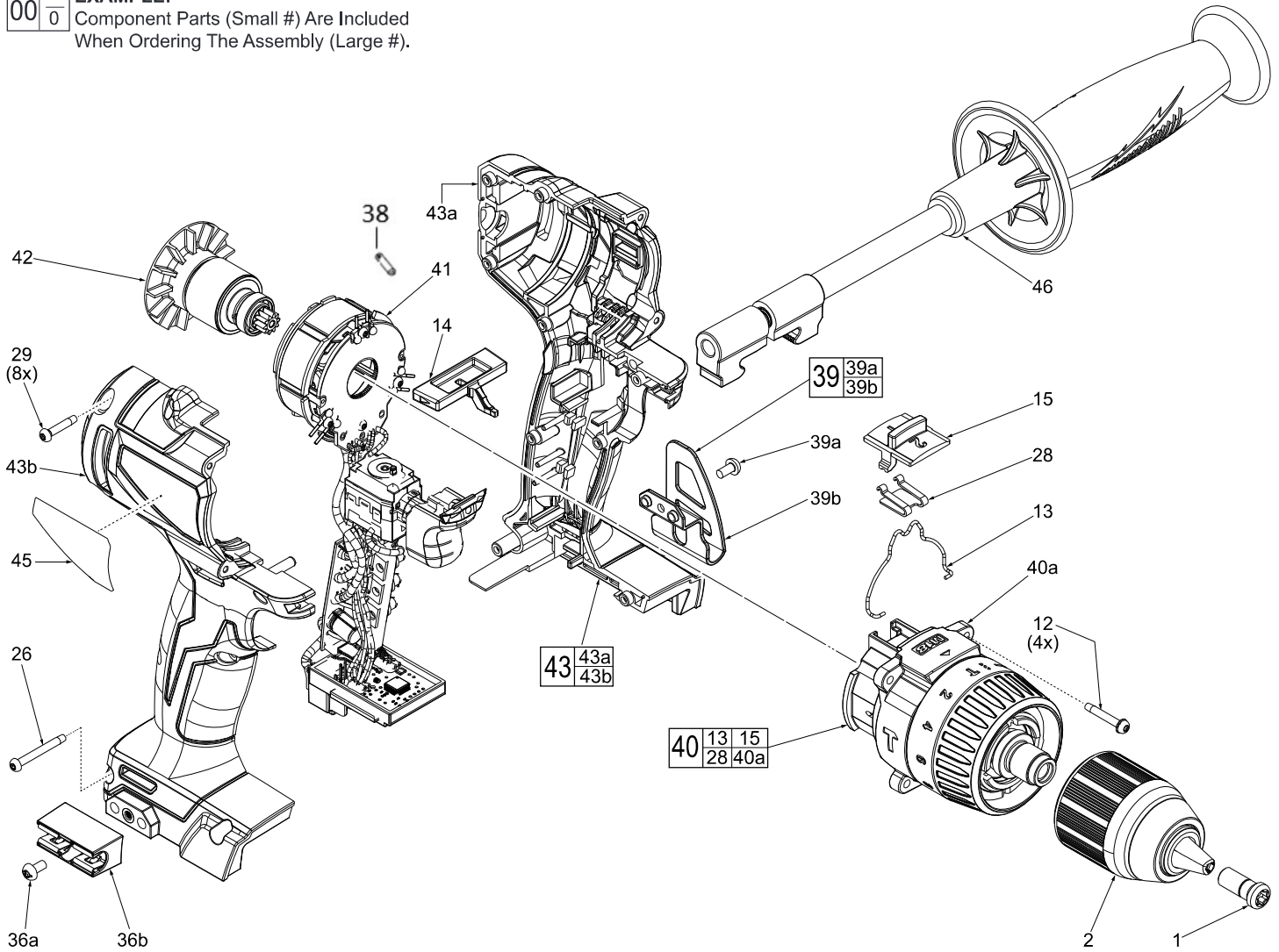




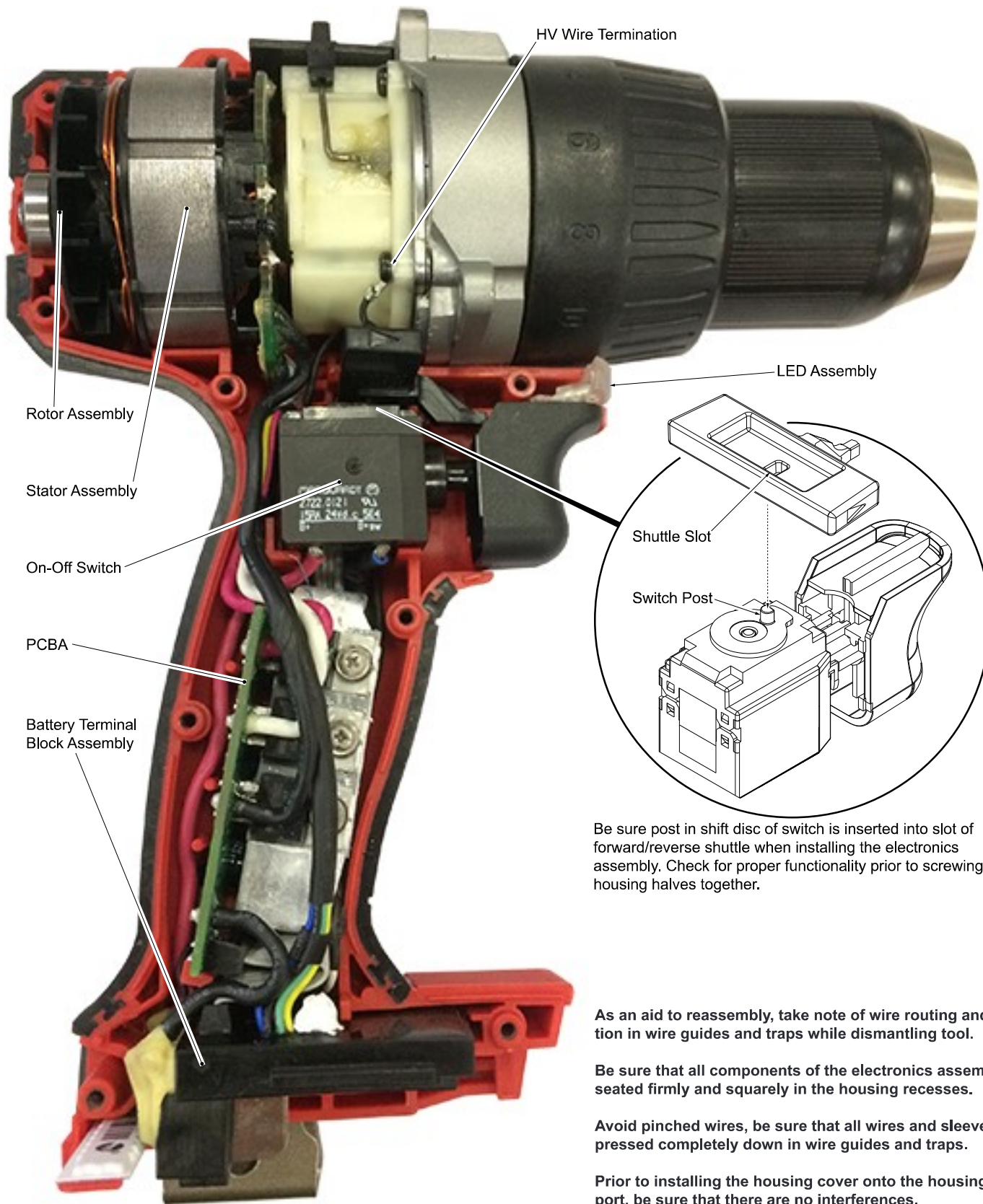
SERVICE PARTS LIST

SPECIFY CATALOG NO. AND SERIAL NO. WHEN ORDERING PARTS		REVISED BULLETIN	DATE
M18™ 13mm Brushless Hammer-Drill			May 2018
MODEL NO.	M18BLPD2-0	WIRING INSTRUCTION SEE PAGE 2	
	2902-20		

EXAMPLE:
 00 0 Component Parts (Small #) Are Included
 When Ordering The Assembly (Large #).



SCREW TORQUE SPECIFICATIONS			
FIG.	WHERE USED	SEAT TORQUE	
		(KG/CM)	(IN/LBS)
1	Gearbox Spindle	461±29	400±25
2	Gearbox Spindle	1095±58	950±50
12	Gearbox	10±1	8±1
26	Right Housing Halve	10±1	8±1
29	Right Housing Halve	10±1	8±1
36a	Belt Clip	14±1	12±1
39a	Belt Clip	14±1	12±1



HV Wire Termination

Rotor Assembly

Stator Assembly

On-Off Switch

PCBA

Battery Terminal Block Assembly

LED Assembly

Shuttle Slot

Switch Post

Be sure post in shift disc of switch is inserted into slot of forward/reverse shuttle when installing the electronics assembly. Check for proper functionality prior to screwing housing halves together.

As an aid to reassembly, take note of wire routing and position in wire guides and traps while dismantling tool.

Be sure that all components of the electronics assembly are seated firmly and squarely in the housing recesses.

Avoid pinched wires, be sure that all wires and sleeves are pressed completely down in wire guides and traps.

Prior to installing the housing cover onto the housing support, be sure that there are no interferences.