



SERVICE PARTS LIST

SPECIFY CATALOG NO. AND SERIAL NO. WHEN ORDERING PARTS		REVISED BULLETIN	DATE
M18™ FUEL HEX Impact Driver - Tool Only			Oct. 2015
MODEL NO. M18FID-0	STARTING SERIAL	WIRING INSTRUCTION SEE PAGE 2	

EXAMPLE:

00	0
----	---

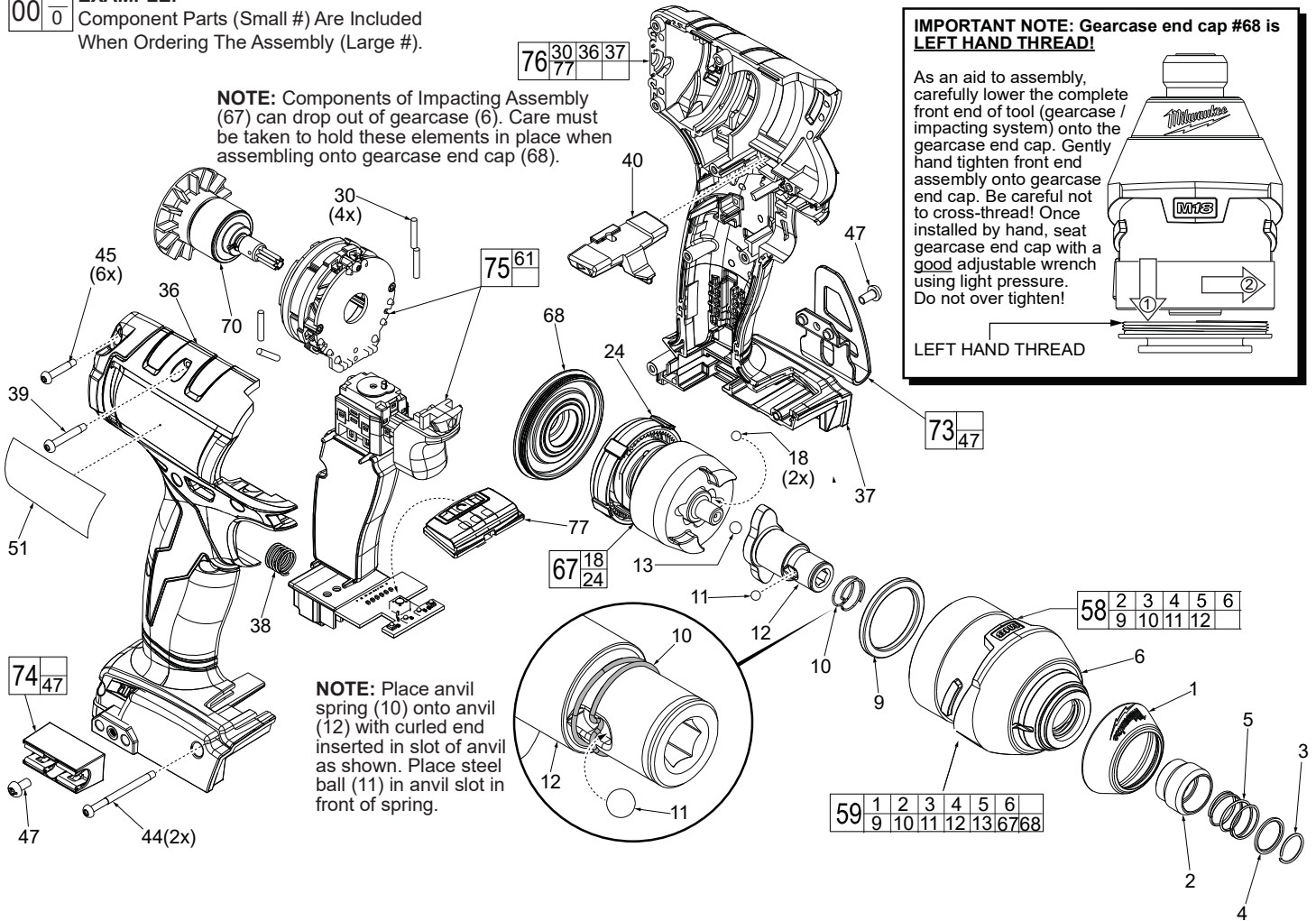
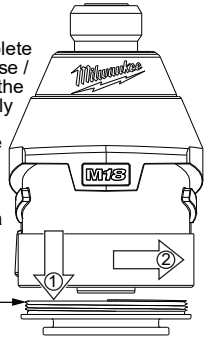
 Component Parts (Small #) Are Included
 When Ordering The Assembly (Large #).

NOTE: Components of Impacting Assembly (67) can drop out of gearcase (6). Care must be taken to hold these elements in place when assembling onto gearcase end cap (68).

NOTE: Place anvil spring (10) onto anvil (12) with curled end inserted in slot of anvil as shown. Place steel ball (11) in anvil slot in front of spring.

IMPORTANT NOTE: Gearcase end cap #68 is **LEFT HAND THREAD!**

As an aid to assembly, carefully lower the complete front end of tool (gearcase / impacting system) onto the gearcase end cap. Gently hand tighten front end assembly onto gearcase end cap. Be careful not to cross-thread! Once installed by hand, seat gearcase end cap with a good adjustable wrench using light pressure. Do not over tighten!



Rotor Assembly

Stator Assembly with Hall PCBA

Watch for pinched wires here. Tuck leads down in cavity behind switch.

Main PCBA

Battery Connector Block Assembly

Compression Spring

High Voltage Protection Wire. Place terminal over screw boss and route down in cavity behind forward/reverse shuttle.

Route LED wires down in cavity behind forward/reverse shuttle.

LED Assembly

On-Off Switch

Speed Selector Assembly

Speed PCBA

