



SERVICE PARTS LIST

SPECIFY CATALOG NO. AND SERIAL NO. WHEN ORDERING PARTS		REVISED BULLETIN	DATE
M18™ FUEL™ METAL CIRCULAR SAW			Dec. 2016
MODEL NO. M18FMCS-0	STARTING SERIAL NO.	WIRING INSTRUCTION See Page Three	

EXAMPLE:
 00 0 Component Parts (Small #)
 Are Included When Ordering
 The Assembly (Large #).

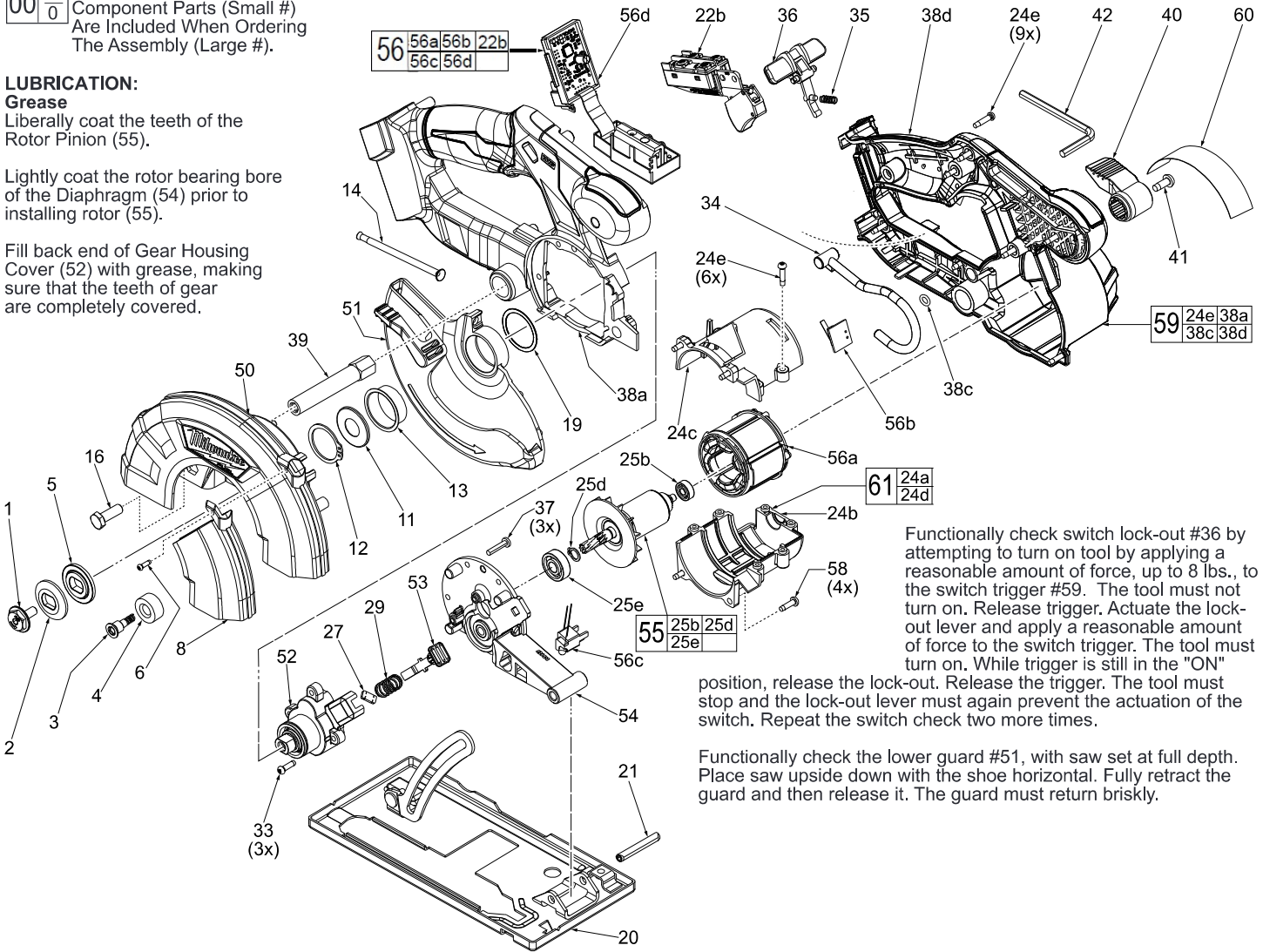
LUBRICATION:

Grease

Liberally coat the teeth of the Rotor Pinion (55).

Lightly coat the rotor bearing bore of the Diaphragm (54) prior to installing rotor (55).

Fill back end of Gear Housing Cover (52) with grease, making sure that the teeth of gear are completely covered.



Functionally check switch lock-out #36 by attempting to turn on tool by applying a reasonable amount of force, up to 8 lbs., to the switch trigger #59. The tool must not turn on. Release trigger. Actuate the lock-out lever and apply a reasonable amount of force to the switch trigger. The tool must turn on. While trigger is still in the "ON" position, release the lock-out. Release the trigger. The tool must stop and the lock-out lever must again prevent the actuation of the switch. Repeat the switch check two more times.

Functionally check the lower guard #51, with saw set at full depth. Place saw upside down with the shoe horizontal. Fully retract the guard and then release it. The guard must return briskly.