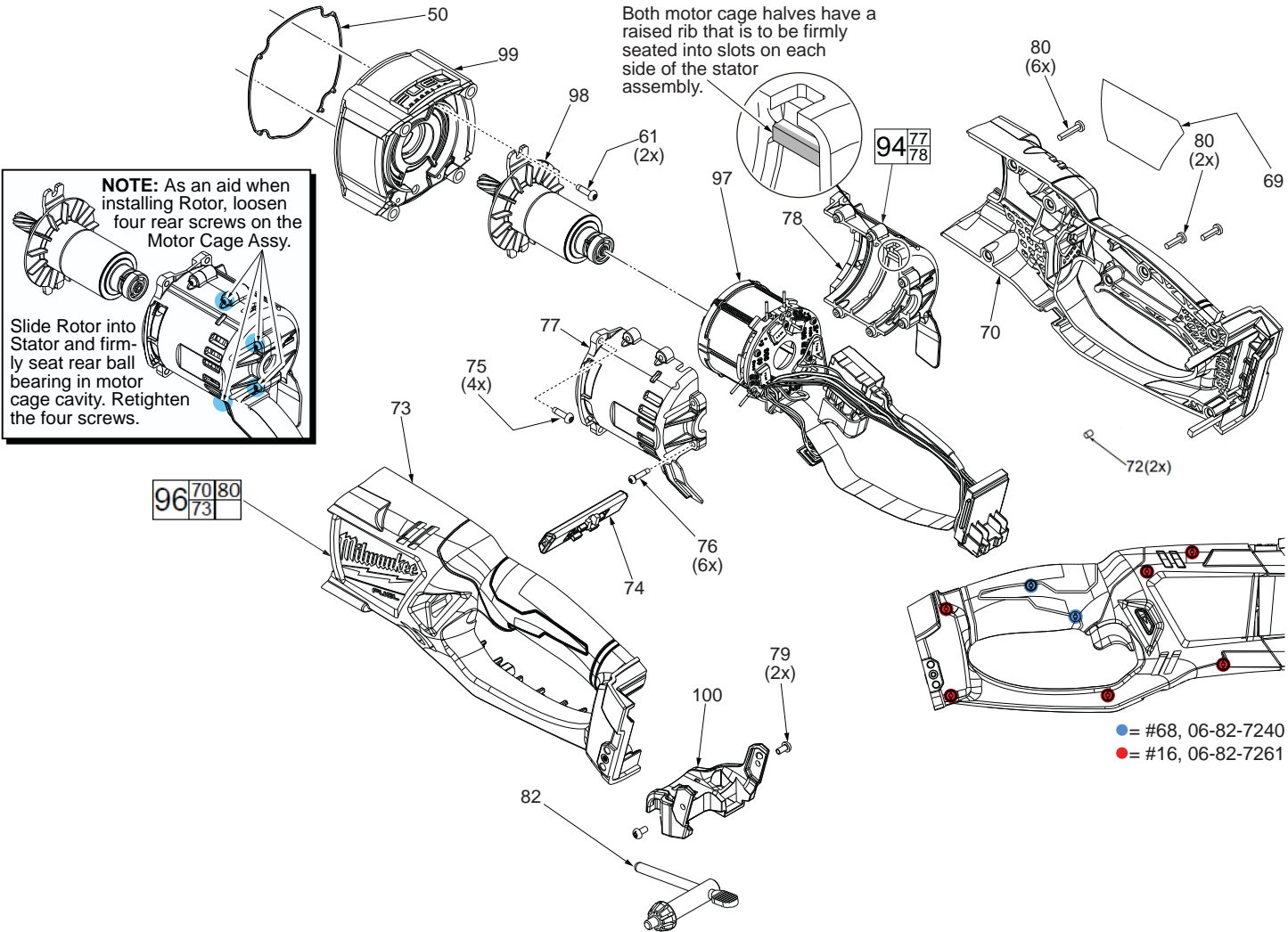




# SERVICE PARTS LIST

SPECIFY CATALOG NO. AND SERIAL NO. WHEN ORDERING PARTS		REVISED BULLETIN	DATE
<b>M18™ FUEL™ Super-Hawg® Drill 13mm</b>			July 2017
MODEL NO. M18FRAD-0	<b>2709-20</b>	WIRING INSTRUCTION <b>SEE PAGE 4</b>	

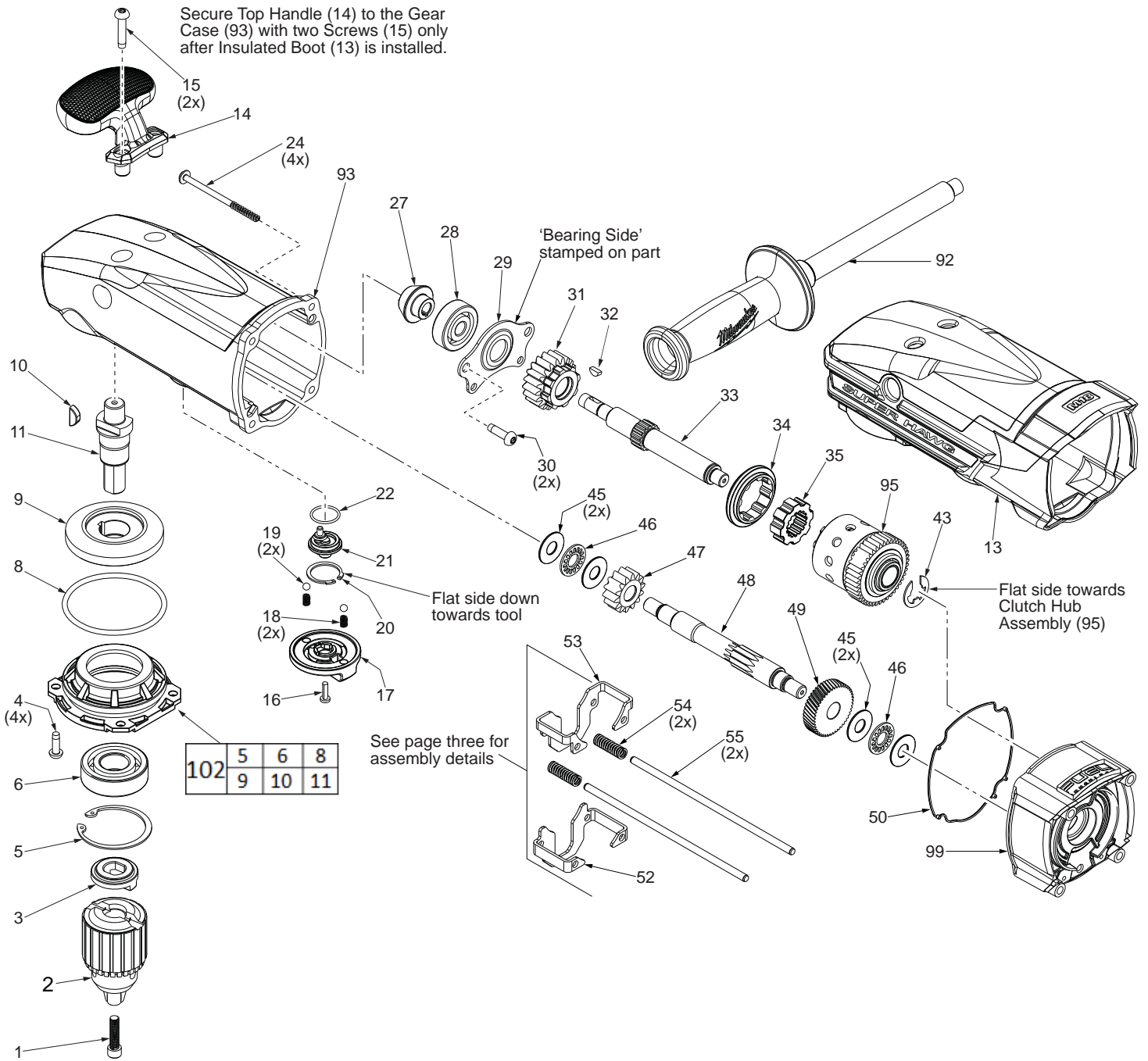
**EXAMPLE:**  
 00 0 Component Parts (Small #) Are Included  
 When Ordering The Assembly (Large #).



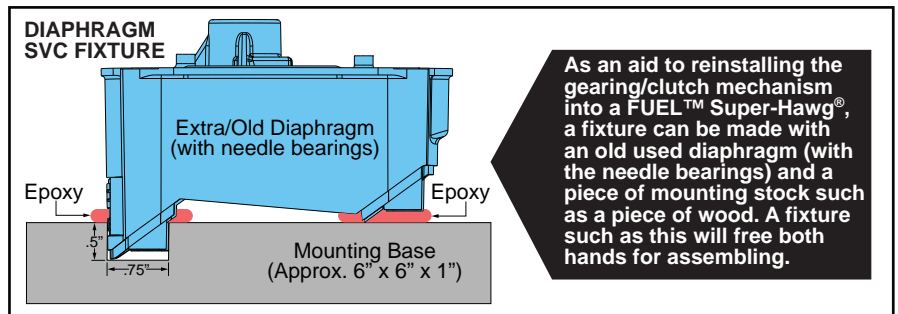
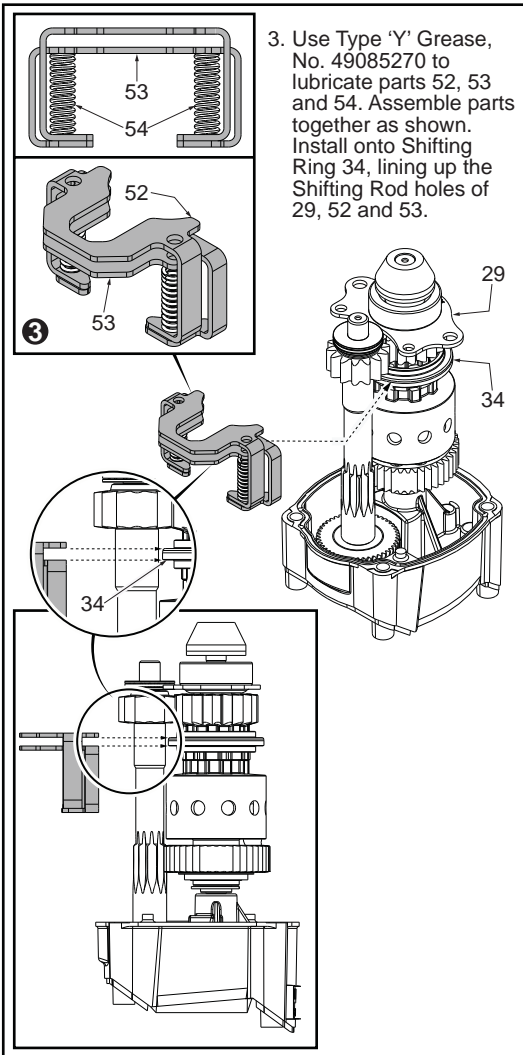
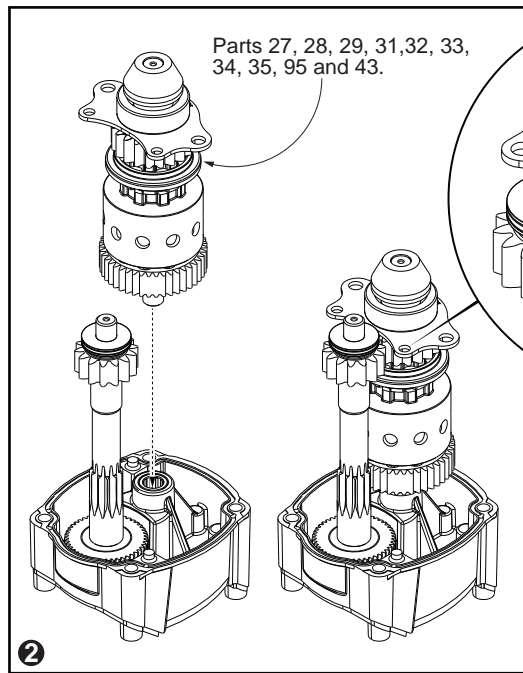
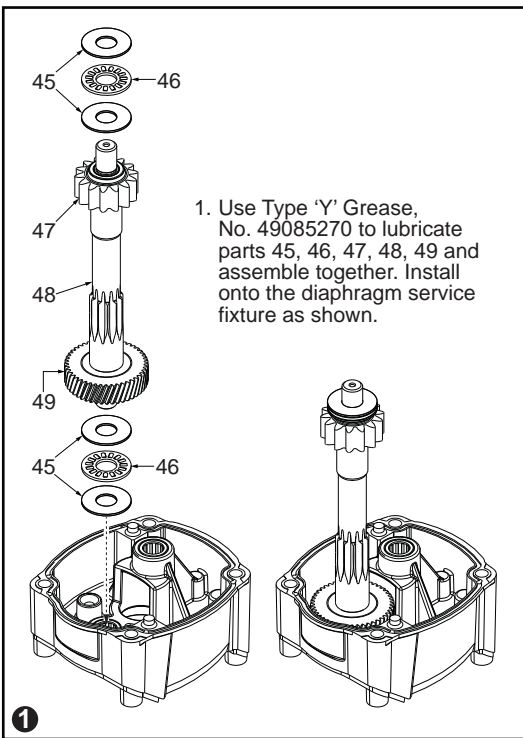
**IMPORTANT!**  
 To prevent damage to the High Voltage Wire Assembly, a component in the Electronics Assembly #97, see service note on page 4 prior to removing the Motor Cage Cover #77.

SCREW TORQUE CHART		
Item	Seat Torque (Kg./cm.) (In./lbs.)	
1	140-160	122-139
4	35-50	30-43
15	60-65	52-56
16	For Shift Hub	8-12 7-10
16	For Handle	12-17 10-14
24	30-45	26-39
30	75-86	65-74
61	46-58	40-50
68	12-17	10-14
75	12-17	10-14
76	7-13	6-11
79	10-15	8-13

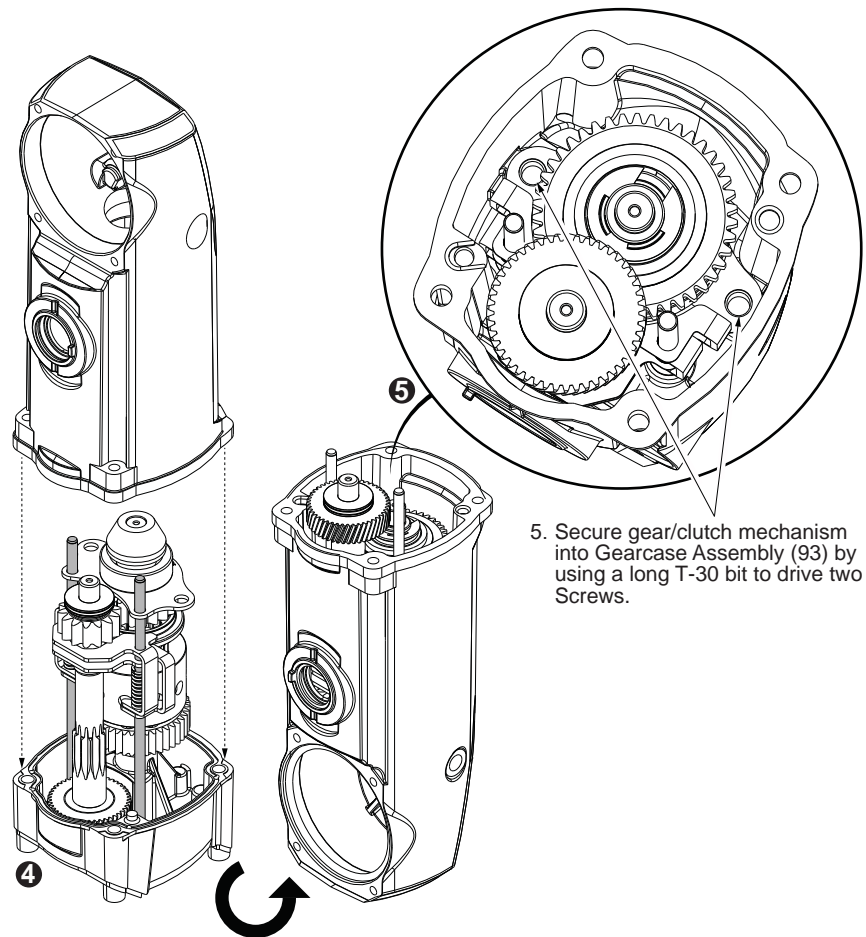
Secure Top Handle (14) to the Gear Case (93) with two Screws (15) only after Insulated Boot (13) is installed.

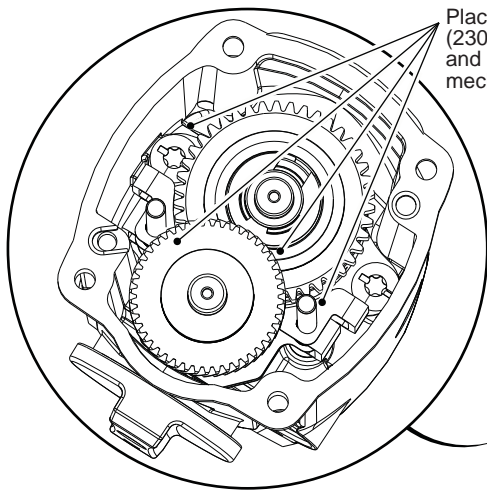


102	5	6	8
	9	10	11



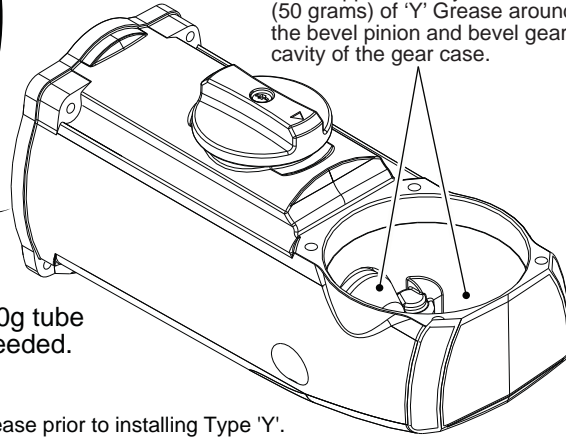
4. Carefully feed both Shifting Rods through the holes in the Bearing Retaining Plate and the Long and Short Shift Plates down into the corresponding holes in the service fixture. Carefully place the Gearcase Assembly over the gearing and onto the service fixture. Turn the assembly over and remove the diaphragm service fixture.



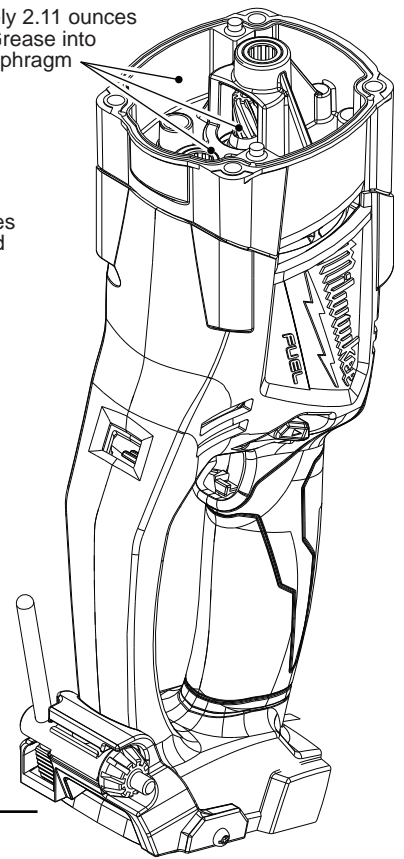


Place approximately 8.11 ounces (230 grams) of 'Y' Grease down and around the gear and clutch mechanism inside the gear case.

Place approximately 2.11 ounces (60 grams) of 'Y' Grease into this area of the diaphragm assembly.



Place approximately 1.76 ounces (50 grams) of 'Y' Grease around the bevel pinion and bevel gear cavity of the gear case.



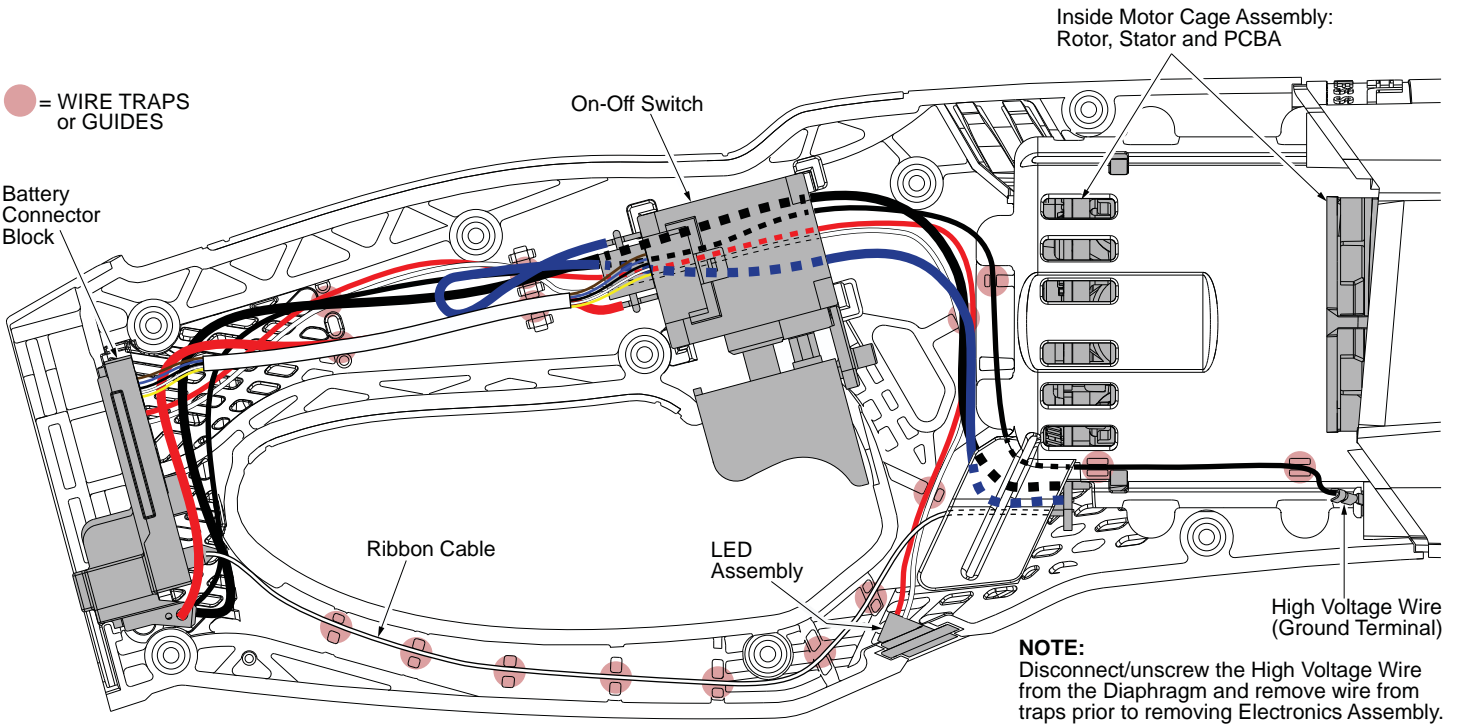
### LUBRICATION NOTES:

Type 'Y' Grease No. 49085270, 6oz./170g tube  
The entire amount of two tubes will be needed.

When servicing, remove 90-95% of the existing grease prior to installing Type 'Y'. Original grease may be similar in color but not compatible with 'Y'.

**DO NOT** wash Clutch Hub Assembly #95. Prior to reinstalling, clean gear assemblies with a clean, dry cloth.

### WIRING DIAGRAM



**AS AN AID TO REASSEMBLY, TAKE NOTICE OF WIRE ROUTING AND POSITION IN WIRE GUIDES AND TRAPS WHILE DISMANTLING TOOL.**

**BE SURE THAT ALL COMPONENTS OF THE ELECTRONICS KIT ARE SEATED FIRMLY AND SQUARELY IN THE HANDLE RECESSES.**

**AVOID PINCHED WIRES, BE SURE THAT ALL WIRES AND SLEEVES ARE PRESSED COMPLETELY DOWN IN WIRE GUIDES AND TRAPS.**

**PRIOR TO INSTALLING THE HANDLE COVER ONTO THE HANDLE SUPPORT, BE SURE THAT THERE ARE NO INTERFERENCES.**