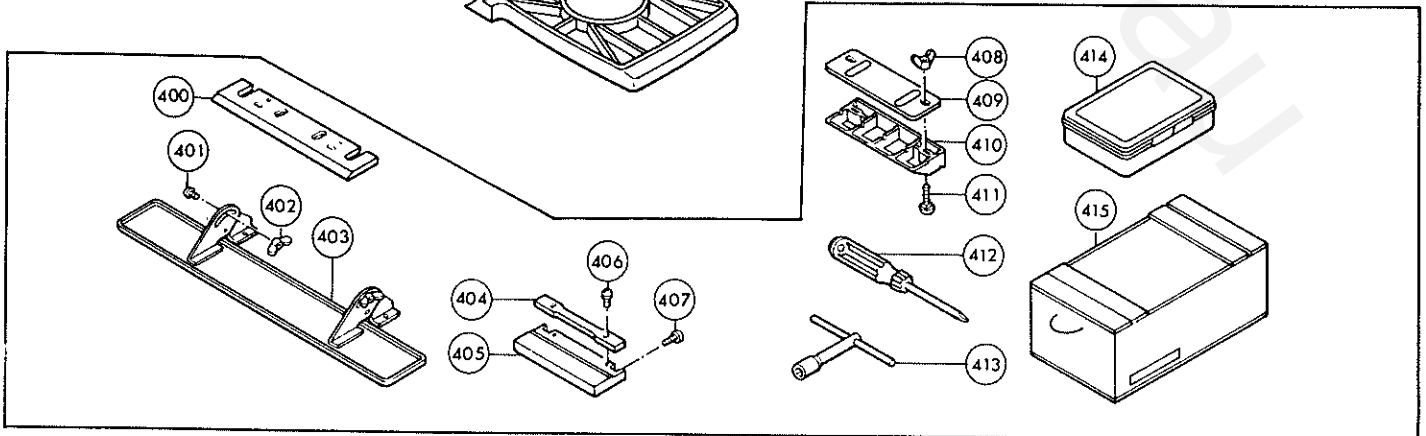
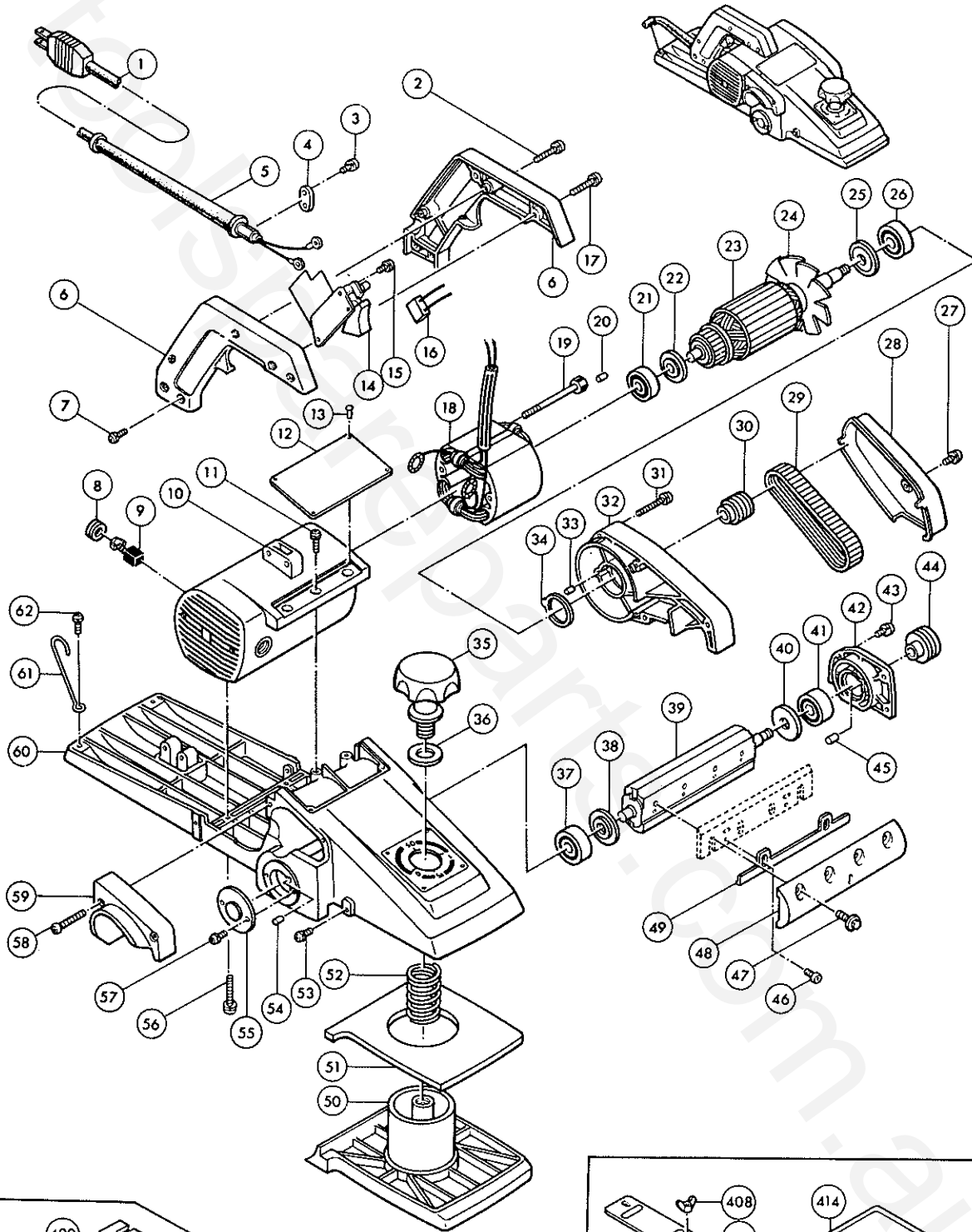




# 155 mm (6 1/8") POWER PLANER Model 1805B



| ITEM NO.       | PART NO. | NO. USED | DESCRIPTION   | ITEM NO.       | PART NO. | NO. USED | DESCRIPTION   |
|----------------|----------|----------|---|----------------|----------|----------|---|
| <u>MACHINE</u> |          |          |   | <u>MACHINE</u> |          |          |   |
| 1              |          | 1        | CORD ASSEMBLY<br>(Assembled Cord, Plug & Cord Guard)  | 18             |          | 1        | FIELD ASSEMBLY<br>(With Garter Spring 654020-2 x 2)               |
|                | 541029-2 |          | Black-White (With Plug)   |                | 523021-0 |          | 100 V.  |
|                | 556019-2 |          | Black-White (With French Type Plug)   |                | 523022-8 |          | 115 V. - 130 V.   |
|                | 545017-1 |          | Black-White (Without Plug)  |                | 523024-4 |          | 200 V.  |
|                | 548029-3 |          | Blue-Brown (Without Plug)   |                | 523025-2 |          | 220 V.  |
|                | 551029-4 |          | UL & CSA Listed (SJT Type With Plug)  |                | 528335-2 |          | 220 V. For SEMKO  |
|                | 551051-1 |          | UL & CSA Listed (SJ Type With Plug)   |                | 523027-8 |          | 230 V. - 250 V.   |
|                | 554015-4 |          | SEV Listed (With Plug)  | 19             | 925298-7 | 2        | H. Bolt M5x75 (With Washer)                                       |
|                | 546019-0 |          | SAA Listed A-12 Ordinary Duty<br>(With Plug)  | 20             | 263002-9 | 1        | Rubber Pin 4  |
|                | 546042-5 |          | SAA Listed A-22 Heavy Duty<br>(With Plug) For Australia   | 21             | 211066-7 | 1        | Ball Bearing 6200LLB  |
|                | 553020-8 |          | Draka (With Plug)   | 22             | 681607-7 | 1        | Insulation Washer   |
|                | 552540-9 |          | Italian Type (With Plug)  | 23             |          | 1        | ARMATURE ASSEMBLY<br>(Assembled Items 21, 22, 23, 24,<br>25 & 26) |
|                | 555015-7 |          | Spanish Type (With Plug)  |                | 513310-1 |          | 100 V.  |
| 2              | 911158-9 | 2        | P. H. Screw M4x30 (With Washer)   |                | 513311-9 |          | 115 V. - 130 V.   |
| 3              | 911131-9 | 2        | P. H. Screw M4x18 (With Washer)   |                | 513312-7 |          | 200 V.  |
| 4              |          | 1        | Strain Relief   |                | 513313-5 |          | 220 V.  |
|                | 687000-3 |          | For Black-White and UL & CSA Listed<br>(SJT Type) Cord  |                | 518315-6 |          | 220 V. For SEMKO  |
|                | 687001-1 |          | For Blue-Brown, SAA Listed (A-12 &<br>A-22), UL & CSA Listed (SJ Type) &<br>Italian Type Cord     |                | 513314-3 |          | 230 V. - 250 V.   |
|                | 687002-9 |          | For Draka, SEV Listed & Spanish Type<br>Cord  | 24             | 241013-4 | 1        | Fan 80  |
|                |          |          |   | 25             | 213102-5 | 1        | Dust Seal 12  |
| 5              |          | 1        | Cord Guard  | 26             | 211106-1 | 1        | Ball Bearing 6201LLB  |
|                | 682507-4 |          | For Black-White, Blue-Brown, UL &<br>CSA Listed (SJT & SJ Type), Draka,<br>SAA Listed (A-22) Cord | 27             | 911206-4 | 1        | P. H. Screw M5x10 (With Washer)                                   |
|                | 682503-2 |          | For SAA Listed (A-12), SEV Listed,<br>Italian Type & Spanish Type Cord                            | 28             | 343301-6 | 1        | Belt Cover  |
|                |          |          |   | 29             | 225042-5 | 1        | Poly V-Belt 6-304   |
| 6              |          | 1        | Handle Set  | 30             | 222007-8 | 1        | V-Pulley 6-23L  |
|                | 181151-9 |          | For With Lock Button Switch   | 31             | 911263-2 | 5        | P. H. Screw M5x40 (With Washer)                                   |
|                | 181231-1 |          | For Without Lock Button Switch  | 32             | 411407-9 | 1        | Bracket   |
| 7              | 911213-7 | 4        | P. H. Screw M5x12 (With Washer)   | 33             | 263005-3 | 1        | Rubber Pin 6  |
| 8              | 643650-4 | 2        | Brush Holder Cap  | 34             | 341384-0 | 1        | Washer 26   |
| 9              |          | 2        | Carbon Brush  | 35             | 271202-7 | 1        | Adjusting Knob 62   |
|                | 643152-0 |          | CB-152 For 100 V. - 130 V.  | 36             | 253004-3 | 1        | F. Washer 13  |
|                | 643153-8 |          | CB-153 For 200 V. - 250 V.  | 37             | 211067-5 | 1        | Ball Bearing 6200ZZ   |
| 10             | 156414-2 | 1        | Motor Housing<br>(With Brush Holder 643653-8 x 2 &<br>S. Screw M5x8 913206-0 x 2)                 | 38             | 341376-9 | 1        | Washer 10   |
|                |          |          |   |                | 132372-6 |          | DRUM ASSEMBLY<br>(Assembled Items 37 - 41 & 46 - 49)              |
| 11             | 911228-4 | 3        | P. H. Screw M5x18 (With Washer)   | 39             |          | 1        | Drum  |
| 12             | 815064-9 | 1        | Name Plate  |                | 161056-9 |          | For VDE   |
| 13             | 953106-2 | 4        | Rivet 0-5   |                | 161070-5 |          | Washer 12   |
| 14             |          | 1        | Switch  | 40             | 341377-7 | 1        | Ball Bearing 6201ZZ   |
|                | 651009-1 |          | Single Pole (With Lock Button)<br>NPAHR2-3S   | 41             | 211107-9 | 1        | Drum Housing  |
|                | 651018-0 |          | Single Pole (With Squared Washer &<br>Lock Button) HPAHR2-3S                                      | 42             | 312926-7 | 1        | P. H. Screw M4x14 (With Washer)                                   |
|                | 651017-2 |          | Single Pole (With Squared Washer &<br>Lock Button) HPAHR2-3<br>For VDE & SEV                      | 43             | 911121-2 | 4        | V Pulley 6-30   |
|                | 651012-2 |          | Single Pole (With Squared Washer &<br>Without Lock Button) HPAH2-3                                | 44             | 222006-0 | 1        | Rubber Pin 6  |
|                | 651107-1 |          | Double Pole (With Lock Button)<br>RPAHR-2WS   | 45             | 263005-3 | 1        | P. H. Screw M4x5 (With Washer)                                    |
| 15             | 911103-4 | 2        | P. H. Screw M4x6 (With Washer)  | 46             | 251246-3 | 4        | H. F. H. Bolt M6x17   |
| 16             | 645006-7 | 1        | Noise Suppressor 100 V. - 250 V.  | 47             | 251609-3 | 8        | Drum Plate  |
| 17             | 911253-5 | 2        | P. H. Screw M5x30 (With Washer)   | 48             | 345027-6 | 2        | Adjusting Plate   |
|                |          |          |   | 49             | 342165-5 | 2        | Front Base  |
|                |          |          |   | 50             | 312927-5 | 1        | Rubber Packing  |
|                |          |          |   | 51             | 421143-9 | 1        | Compression Spring 24   |
|                |          |          |   | 52             | 231233-8 | 1        | P. H. Screw M5x8 (With Washer)                                    |
|                |          |          |   | 53             | 911201-4 | 2        | Rubber Pin 4  |
|                |          |          |   | 54             | 263002-9 | 1        |   |

| ITEM NO.           | PART NO. | NO. USED | DESCRIPTION   | ITEM NO.           | PART NO. | NO. USED | DESCRIPTION   |
|--------------------|----------|----------|---|--------------------|----------|----------|---|
| <u>MACHINE</u>     |          |          |   | <u>ACCESSORIES</u> |          |          |   |
| 55                 | 285011-8 | 1        | Bearing Cover 38                                    | 405                | 334015-8 | 1        | Gauge Base  |
| 56                 | 911256-9 | 2        | P. H. Screw M5x35 (With Washer)                     | 406                | 911218-7 | 2        | P. H. Screw M5x14 (With Washer)                           |
| 57                 | 911206-4 | 2        | P. H. Screw M5x10 (With Washer)                     | 407                | 251212-0 | 2        | Screw M5x13   |
| 58                 | 911158-9 | 2        | P. H. Screw M4x30 (With Washer)                     |                    | 123006-2 |          | SHARPENING HOLDER ASSEMBLY<br>(Assembled Items 408 – 411) |
| 59                 | 411408-7 | 1        | Chip Cover  | 408                | 934301-3 | 2        | W. Nut M6   |
| 60                 | 156400-3 | 1        | Main Frame  | 409                | 341009-6 | 1        | Pressure Plate  |
| 61                 | 281007-7 | 1        | Holder  | 410                | 312846-5 | 1        | Sharpening Holder   |
| 62                 | 911324-8 | 1        | P. H. Screw M6x16 (With Washer)                     | 411                | 251920-3 | 2        | C. S. N. Bolt M6x30                                       |
| <u>ACCESSORIES</u> |          |          |   | 412                | 783002-8 | 1        | Screwdriver   |
| 400                | 731010-3 | 2        | Planer Blade 155                                    | 413                | 782209-3 | 1        | Socket Wrench 9   |
|                    | 123053-3 |          | GUIDE RULE ASSEMBLY<br>(Assembled Items 401 – 403)  | 414                | 824001-2 | 1        | Tool Case   |
| 401                | 923211-9 | 2        | C. S. N. Bolt M5x12                                 | 415                | 821087-7 | 1        | Wooden Carrying Case                                      |
| 402                | 934201-7 | 2        | W. Nut M5   |                    |          |          |   |
| 403                | 164455-4 | 1        | Guide Rule  |                    |          |          |   |
|                    | 123009-6 |          | BLADE GAUGE ASSEMBLY<br>(Assembled Items 404 – 407) |                    |          |          |   |
| 404                | 411111-0 | 1        | Gauge Plate   |                    |          |          |   |