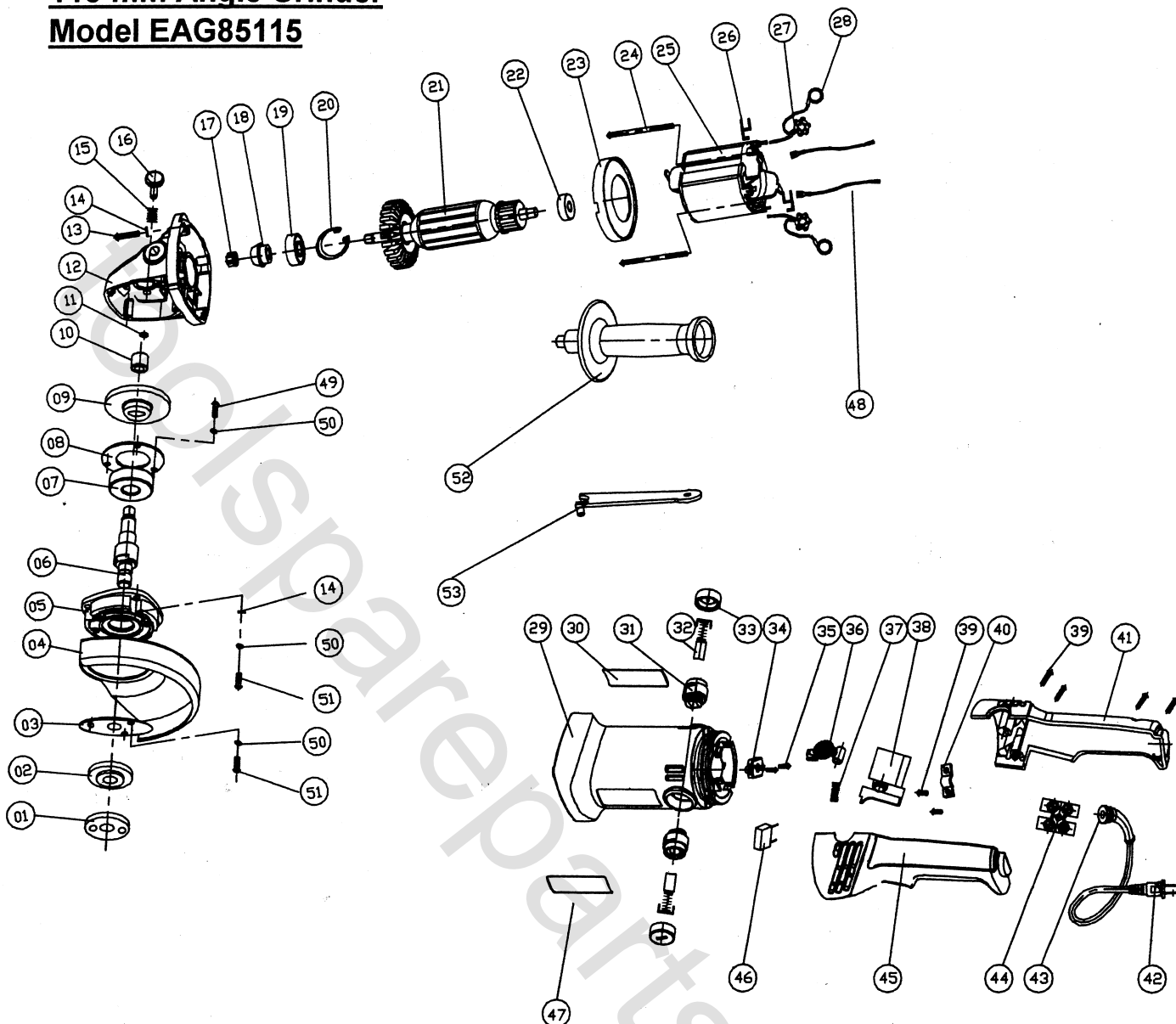


# 115 mm Angle Grinder Model EAG85115



## UNIQUE SELLING POINT:

Long body with soft grip rotatable rear handle, for greater comfort, control and safety.

## OTHER KEY FEATURES:

1. Disc lock and wheel spanner for faster wheel changing.
2. Toolless safety guard release.
3. Three position auxiliary handle.

## SPECIFICATIONS:

Power Input:	850 Watts
No Load Speed:	10,000 rpm
Disc Bore Diameter:	22.2 mm
Disc Diameter:	115 mm (4 1/2")
Spindle Thread:	M14
Weight:	2.6 kg

## STANDARD ACCESSORIES:

- ★ Auxiliary Handle
- ★ Wheel Spanner
- ★ 1 x Grinding Wheel
- ★ 1 x Inner Flange
- ★ 1 x Outer Flange

Note: Specifications may change without notice