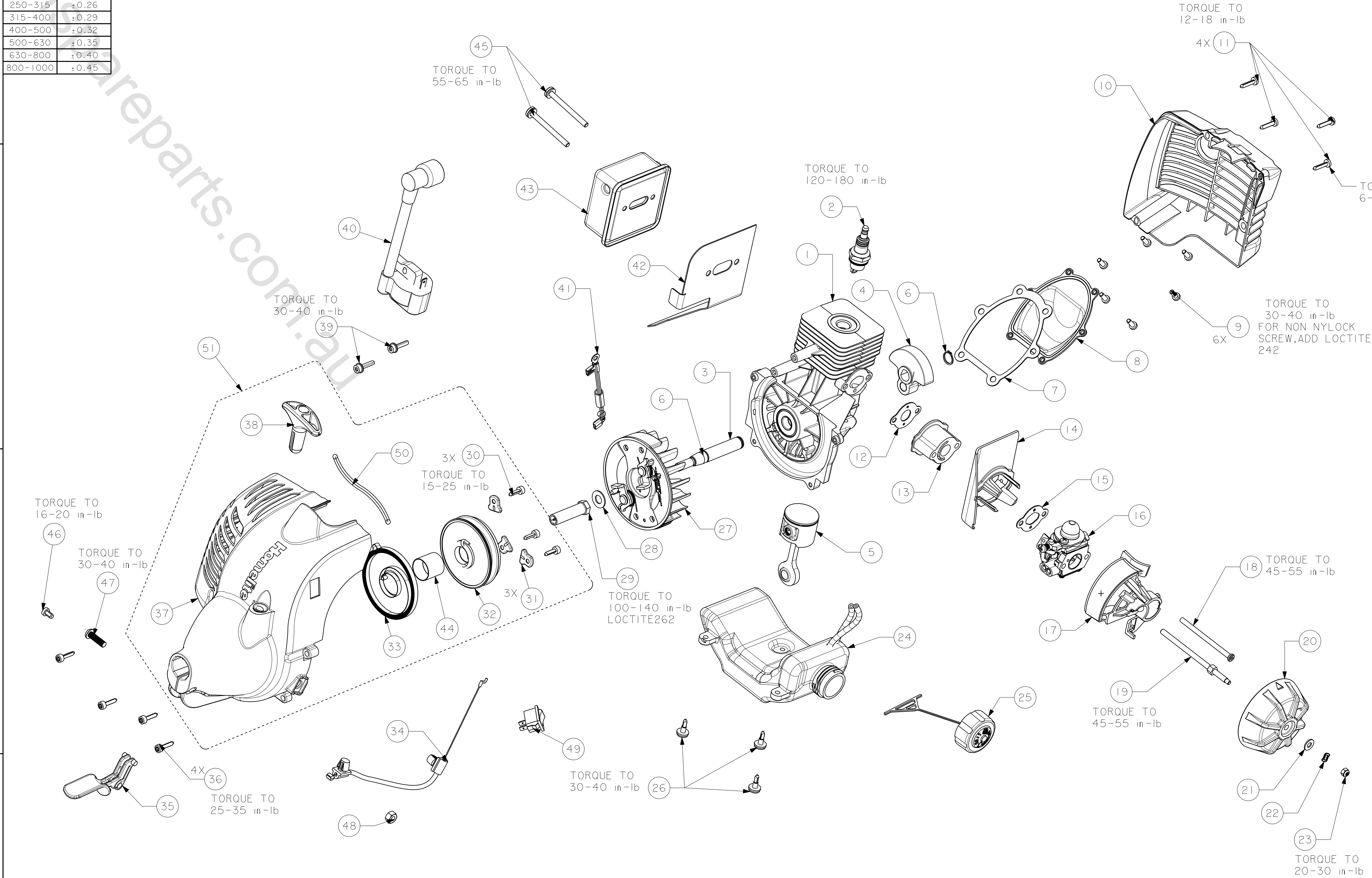


100262603		SIZE
DRAWING NUMBER		4
TOLERANCE FOR METAL		
DIVISION	TOLERANCE	
DIMENSION	(IN)	(MM)
-10	±0.08	
10-30	±0.11	
30-50	±0.13	
50-80	±0.15	
80-120	±0.18	
120-180	±0.20	
180-250	±0.23	
250-315	±0.26	
315-400	±0.29	
400-500	±0.32	
500-630	±0.35	
630-800	±0.40	
800-1000	±0.45	

PRELIMINARY



- NOTES:
- AIR GAP SETTING OF .008/-.012" TO BE MADE WITH SHIM BETWEEN FLYWHEEL MAGNETS AND IGNITION PICKUPS. THE IGNITION MODULE (ITEM 40) AND FLYWHEEL (ITEM 27) MUST NOT TOUCH EACH OTHER FOR 360° ROTATION.
 - PUSH FUEL LINES TO STOP OVER CARBURETOR. 2 PLACES, USING P-80.
 - INSTALL SPRING CONTAINER, ITEM 33, AND STARTER PULLEY, ITEM 32, WITH SPRING LOOP OVER POST IN STARTER HOUSING, ITEM 37. REWIND STARTER PULLEY 2-2.5 TURNS. INSTALL RETAINER TABS, ITEM 31, WITH 3 SCREWS, ITEM 30.
 - LUBRICATE STARTER POST WITH LIGHT COAT OF GREASE BEFORE INSTALLING STARTER PULLEY.
 - SEE QUALITY ASSURANCE FOR ADDRESSING CRITICAL AND MAJOR INSPECTIONS

TOTAL (C) DIMENSIONS ON THIS PAGE = 0

TOTAL (M) DIMENSIONS ON THIS PAGE = 0

PRELIMINARY

REVISIONS				
REV	ZONE	DESCRIPTION	ECR	CHECKED
01		PRODUCTION RELEASED	AMY 06/16/07	HL0706032
02	B8	760700002 WAS 760345001 (ITEM 49) AMY 10/26/07	XXXXXXX	XXX XX/XX/XX
	B7,C8	518923001 WAS 678410002 (ITEM 44), ADDED ASSY ITEM 51		
COMPUTERIZED DOCUMENT NO MANUAL REVISIONS PERMITTED				

PRELIMINARY

309792001		26cc CE POWER HEAD ASSM/NO-CLUTCH/NON-CE		AS PURCHASED	
PART NUMBER		DESCRIPTION		REMARKS	
M.S.		UNLESS OTHERWISE SPECIFIED DIMENSIONS ARE IN MILLIMETERS. FOR ALL UNSPECIFIED DIMENSIONS PLEASE REFER TO THE CAD FILE. DO NOT SCALE. USE DIMENSIONS ONLY. DIMENSION & TOLERANCE PER ASME Y14.5M-1994		TTI GROUP NORTH AMERICA	
P.S.		DRAWN BY XWP 03/08/07		DATE 03/08/07	
DIST		PURCH/FAB		DATE 03/08/07	
"THIS DRAWING BELONGS TO TTI GROUP NORTH AMERICA. ITS CONTENTS ARE CONFIDENTIAL AND PROPRIETARY AND SHALL NOT BE DISCLOSED TO OR USED BY OR FOR OUTSIDE PARTIES WITHOUT TTI GROUP NORTH AMERICA'S WRITTEN CONSENT."		CHECKED BY DDB 03/08/07		DATE 03/08/07	
THIRD ANGLE PROJECTION		APPROVED BY KW.MA 03/08/07		DATE 03/08/07	
MATERIAL		SEE BOM		TITLE 26cc CE POWER HEAD ASSM/NO-CLUTCH/NON-CE	
SCALE 1:2		SIZE 4		DRAWING NUMBER 309792001	
				REV 02	
				SHEET OF	