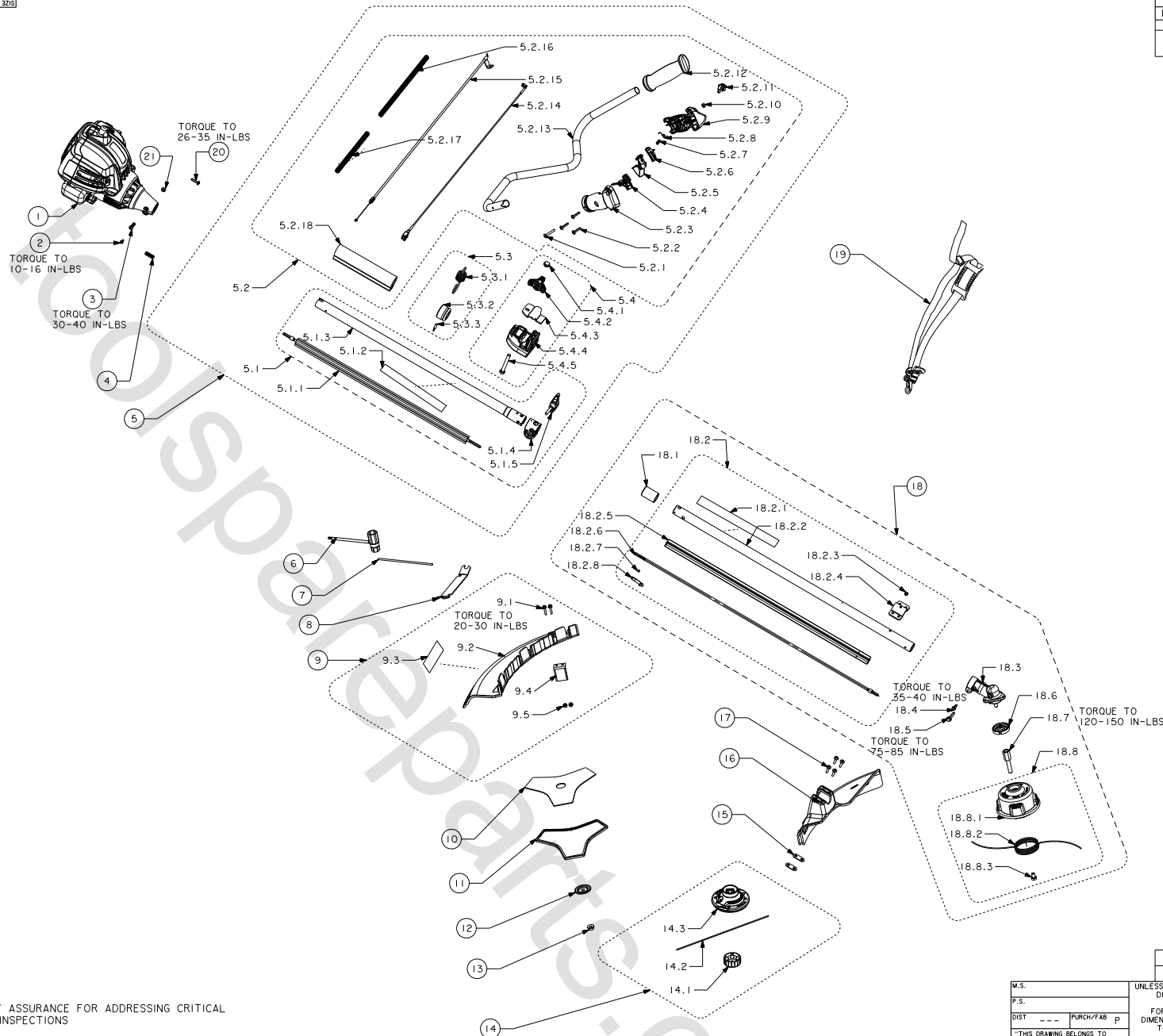


| | |
|---------------------|-----------|
| 200812060 | 3215 |
| TOLERANCE FOR METAL | |
| DIVISION | TOLERANCE |
| DIMENSION | (1/12 1) |
| -10 | ±0.08 |
| 10-30 | ±0.11 |
| 30-50 | ±0.13 |
| 50-80 | ±0.15 |
| 80-120 | ±0.18 |
| 120-180 | ±0.20 |
| 180-250 | ±0.23 |
| 250-315 | ±0.26 |
| 315-400 | ±0.29 |
| 400-500 | ±0.32 |
| 500-630 | ±0.35 |
| 630-800 | ±0.40 |
| 800-1000 | ±0.45 |

| REVISES | | | | |
|-------------------------------|------|----------------|-----------|--------------|
| REV | ZONE | DESCRIPTION | ECR | CHECKED |
| 01 | | DESIGN RELEASE | HL0903063 | HJM 03/27/09 |
| COMPUTERIZED DOCUMENT | | | | |
| NO MANUAL REVISIONS PERMITTED | | | | |

Homelite
Uncontrolled copy
for reference copy
(D.C.C.)



NOTES:

1. SEE QUALITY ASSURANCE FOR ADDRESSING CRITICAL AND MAJOR INSPECTIONS

TOTAL (C) DIMENSIONS ON THIS PAGE = 0

TOTAL (M) DIMENSIONS ON THIS PAGE = 0

| | | | | | |
|---|--|--|--|--------------|--|
| 090218002 | | 30cc RYOBI STRAIGHT SPLIT BRUSHCUTTER/BIKE/NO CATALYST/RBC30SBSN | | AS PURCHASED | |
| PART NUMBER | | DESCRIPTION | | REMARKS | |
| UNLESS OTHERWISE SPECIFIED DIMENSIONS ARE IN MILLIMETERS. FOR ALL UNSPECIFIED DIMENSIONS PLEASE REFER TO THE CAD FILE. DO NOT SCALE. USE DIMENSIONS ONLY. DIMENSION & TOLERANCE PER ASME Y14.5M-1994 | | THIRD ANGLE PROJECTION | | SEE BOM | |
| MATERIAL | | DATE | | TITLE | |
| DRAWN BY | | DATE | | TITLE | |
| CHECKED BY | | DATE | | TITLE | |
| APPROVED BY | | DATE | | TITLE | |
| THIS DRAWING BELONGS TO TTI GROUP NORTH AMERICA. ITS CONTENTS ARE CONFIDENTIAL AND PROPRIETARY AND SHALL NOT BE DISCLOSED TO OR USED BY OR FOR OUTSIDE PARTIES WITHOUT TTI GROUP NORTH AMERICA'S WRITTEN CONSENT. | | DATE | | TITLE | |
| SIZE | | DRAWING NUMBER | | REV | |
| SCALE | | NONE | | SHEET 1 OF 1 | |