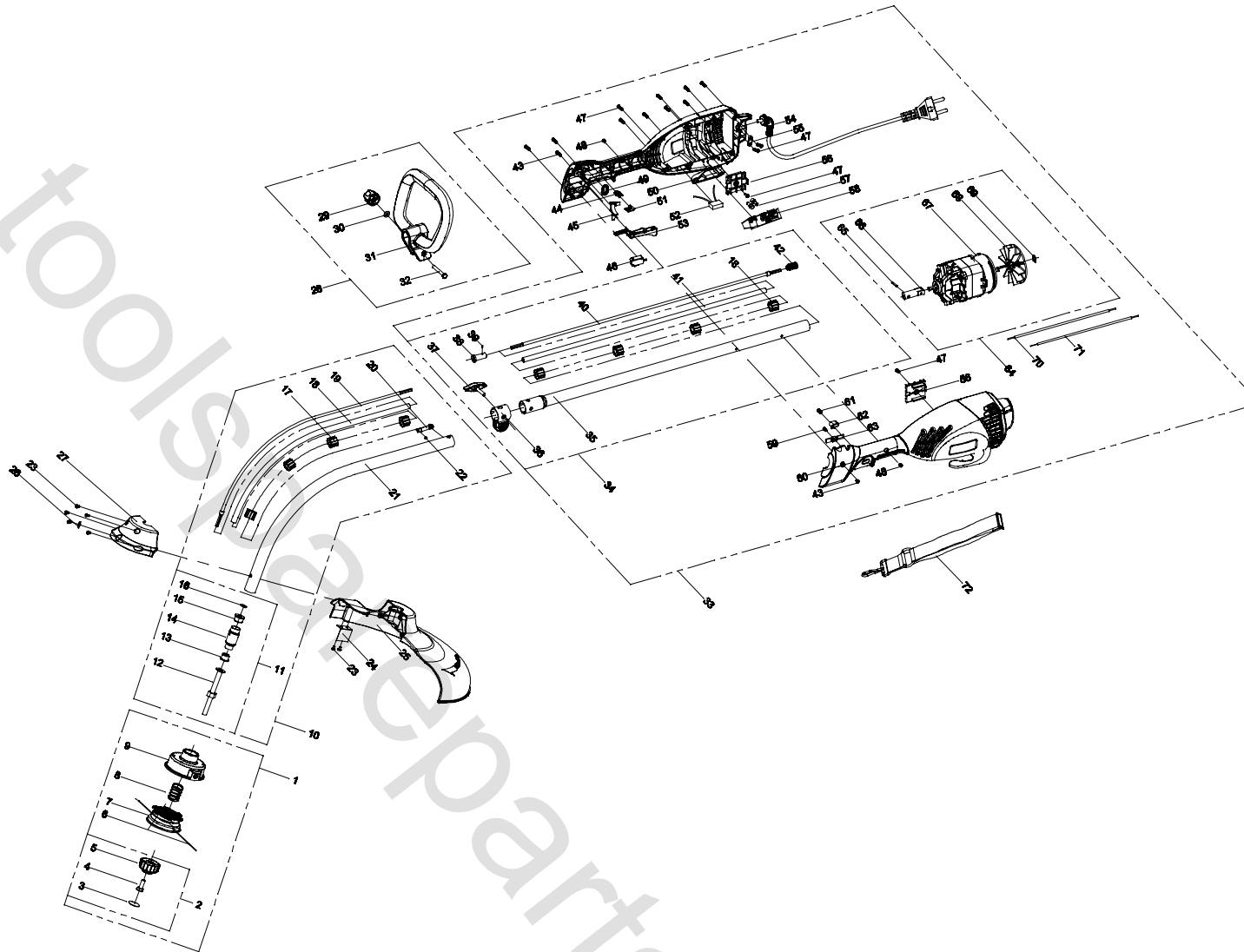


200210660	3218
TOLERANCE FOR PLASTIC	
DIVISION	TOLERANCE (CLASS 5)
-10	±0.10
10-30	±0.15
30-50	±0.20
50-75	±0.25
75-100	±0.30
100-125	±0.35
125-150	±0.40
150-175	±0.45
175-200	±0.50
200-250	±0.60
250-315	±0.70

REVISIONS				
REV	ZONE	DESCRIPTION	ECR	CHECKED
01		DESIGN RELEASED	HJ/WYL 04/22/10	HL1004034 WYL 04/28/10
02		CORRECTED THE DESCRIPTION	HJ/WYL 04/29/10	HL1004054 WYL 05/10/10
COMPUTERIZED DOCUMENT NO MANUAL REVISIONS PERMITTED				

Homelite
Uncontrolled copy
for reference copy
(D.C.C.)



NOTES:
1. FOR ALL UNSPECIFIED LINEAR TOLERANCES PLEASE REFER TO TABLE.
2. SEE QUALITY ASSURANCE FOR ADDRESSING CRITICAL AND MAJOR INSPECTIONS:

TOTAL C DIMENSIONS ON THIS PAGE = 0
TOTAL M DIMENSIONS ON THIS PAGE = 0

099017007		38 CM LINE TRIMMER, 230-240V, 1000W RLT-1000EX, TOP MOUNT/0.3m SAA PLUG		AS PURCHASED	
PART NUMBER		DESCRIPTION		REMARKS	
UNLESS OTHERWISE SPECIFIED DIMENSIONS ARE IN MILLIMETERS. FOR ALL UNSPECIFIED DIMENSIONS PLEASE REFER TO THE CAD FILE. DO NOT SCALE. USE DIMENSIONS ONLY. DIMENSION & TOLERANCE PER ASME Y14.5M-1994		DRAWN BY HJ 04/22/10	DATE 04/22/10	TTI GROUP NORTH AMERICA	
CHECKED BY WYL 04/22/10		DATE 04/22/10		38 CM LINE TRIMMER, 230-240V, 1000W RLT-1000EX, TOP MOUNT/0.3m SAA PLUG	
APPROVED BY ZHJ 04/22/10		DATE 04/22/10			
MATERIAL NONE		SIZE 4		DRAWING NUMBER 099017007	REV 02
THIRD ANGLE PROJECTION		SCALE NONE		SHEET 1 OF 1	