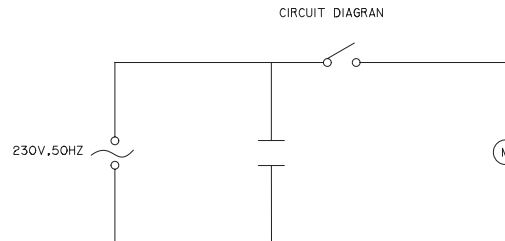
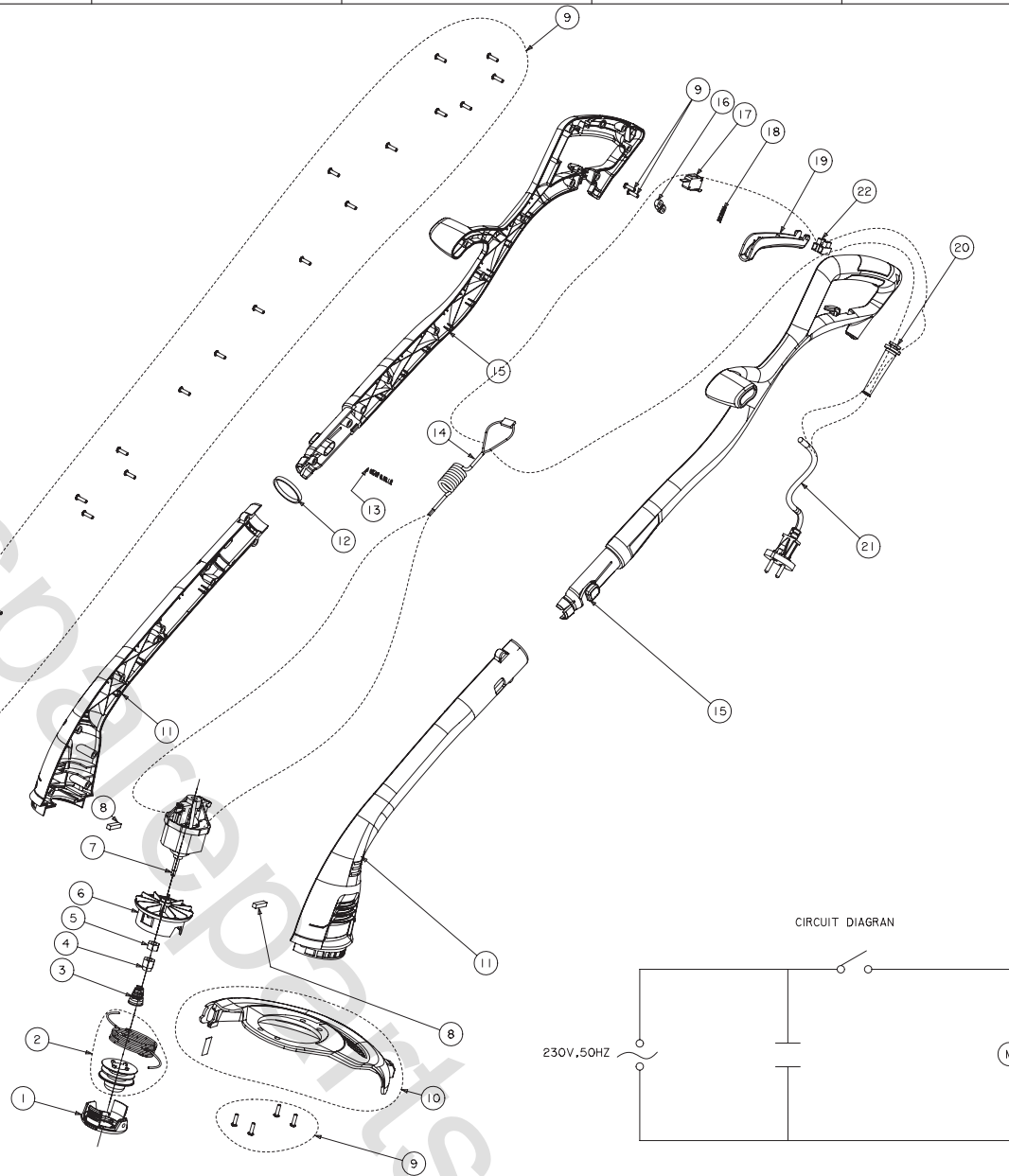


500216660	3218
TOLERANCE FOR ASSEMBLY	
DIVISION	TOLERANCE
DIMENSION (1 IT 12.1)	
-10	+0.08
10-30	+0.11
30-50	+0.13
50-80	+0.15
80-120	+0.18
120-180	+0.20
180-250	+0.23
250-315	+0.26
315-400	+0.29
400-500	+0.32
500-630	+0.35
630-800	+0.40
800-1000	+0.45

REVISES				
REV	ZONE	DESCRIPTION	ECM	CHECKED
02		DESIGN RELEASE	LSX/CL 04/17/12	OP12030511
CL 05/09/12				
COMPUTERIZED DOCUMENT				
NO MANUAL REVISIONS PERMITTED				



NOTES:

1. REFER TO COMPONENT DRAWING FOR INSPECTION CRITERIA
2. SEE QUALITY ASSURANCE FOR ADDRESSING CRITICAL AND MAJOR DIMENSIONS
- TOTAL THIS PAGE = 0
- TOTAL THIS PAGE = 1

099913005		AC RYOBI 300W 230V LINE TRIMMER 25cm/RLT3025S/SAA PLUG 0.35m CORD/SAA/ROHS/PAHS		AS PURCHASED	
PART NUMBER		DESCRIPTION		REMARKS	
UNLESS OTHERWISE SPECIFIED DIMENSIONS ARE IN MILLIMETERS. FOR ALL UNSPECIFIED DIMENSIONS PLEASE REFER TO THE CAD FILE. DO NOT SCALE. USE DIMENSIONS ONLY. DIMENSION & TOLERANCE PER ASME Y14.5-2009		DRAWN BY LSX 04/17/12	DATE 04/17/12	TTI GROUP NORTH AMERICA	
THIRD ANGLE PROJECTION		CHECKED BY CL 04/17/12	DATE 04/17/12	TITLE AC RYOBI 300W 230V LINE TRIMMER 25cm/RLT3025S/SAA PLUG 0.35m CORD/SAA/ROHS/PAHS	
MATERIAL N/A		SIZE 4	DRAWING NUMBER 099913005	REV 02	
SCALE 4:10		SHEET 1 OF 1			