

Spare Part Listing

SPL Serial No.: ACTR-2010042804

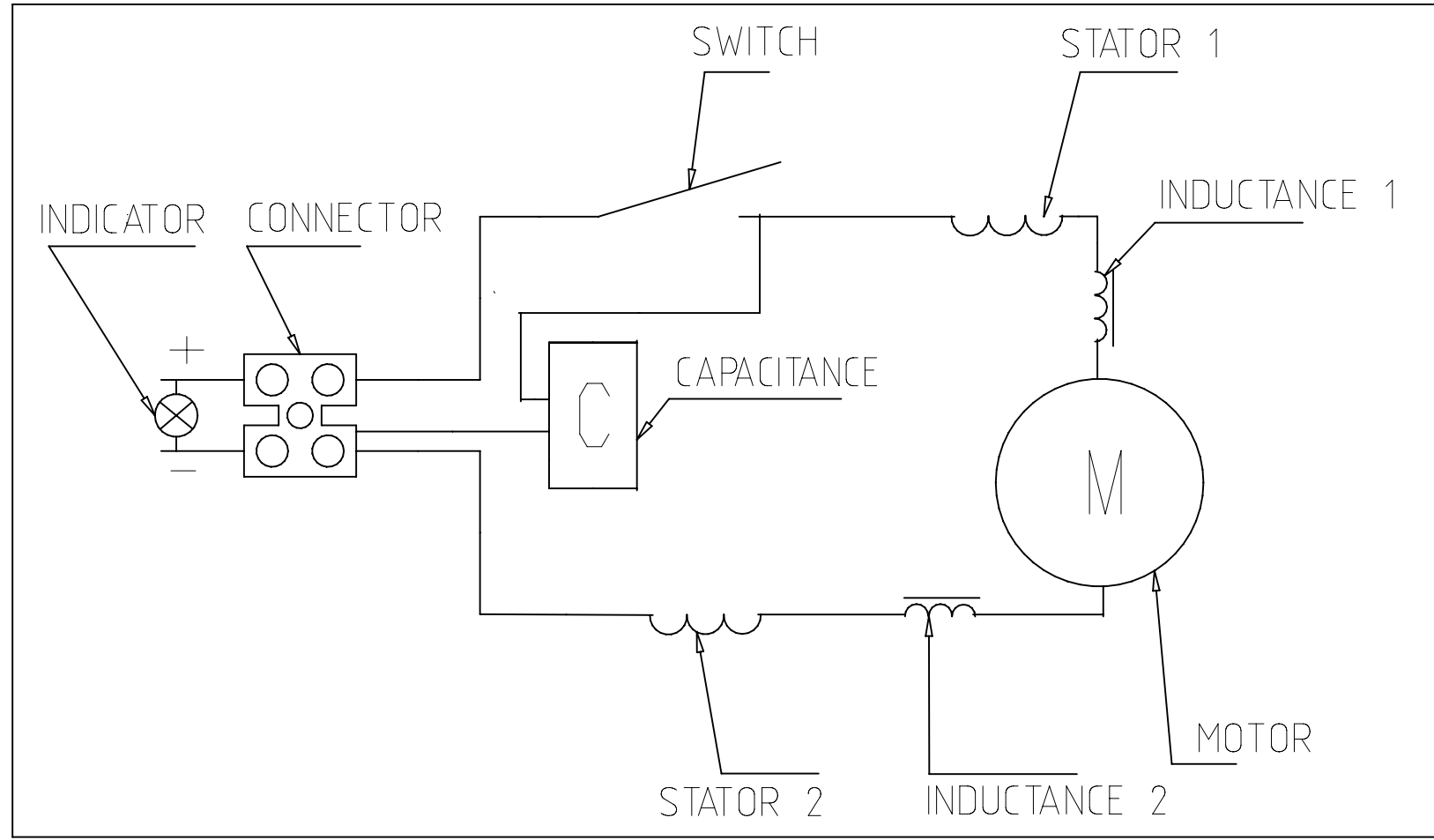
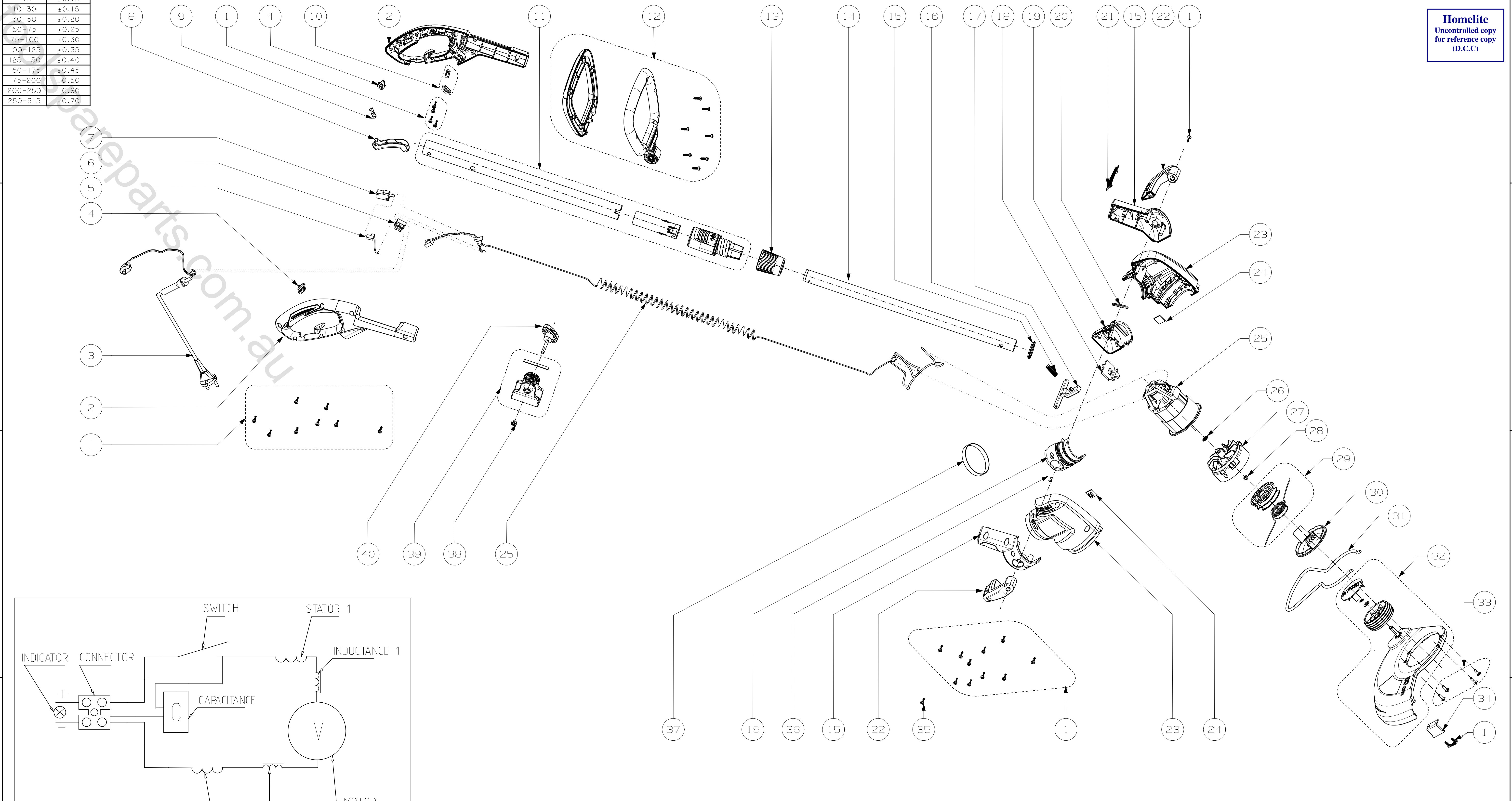
TTI Model No. : 099610006

Description: AC 500W Line Trimmer RLT5030S SAA version

Customer No./Model No.: RLT5030S

Revision	ECR No.	Effective Date	Checked By	
01	HL-ECR1004034	13-May-10	Zhou Hai Jun	Release spare part list

ITEM	TTI P/N	COMPONENT NO. DESCRIPTION	QTY	REMARK
1	099610004001	Screw/ST4X14/Black	25pcs	Homelite Uncontrolled copy for reference copy (D.C.C)
2	099610004002	Left and right handle with over mold/ABS/light	1set	
3	099610006001	Power cord with strain relief&live tool indicator assembly/0.35m/SAA plug/RLT5030S	1set	
4	099610004004	Left and right light cover/PC/RLT5030S	1set	
5	099610004005	cord with terminal assembly/connector to switch/RLT5030S	1set	
6	099610004006	Connector	1pcs	
7	099610004007	Micro switch/RLT5030S	1pcs	
8	099610004008	Trigger/Yellow/ABS/RLT5030S	1pcs	
9	099610004009	Spring/Trigger/Φ7.7XΦ.8X7/RLT5030S	1pcs	
10	099610004010	cord clamp	2pcs	
11	099610004600	upper shaft assembly/with shaft bushing&logo label/Yellow/Φ32X513/RLT5030S	1set	
12	099610004011	Aux handle assembly with over mold/Dark Grey/RLT5030S	1set	
13	099610004012	Collar/Black/RLT5030S	1pcs	
14	099610004601	Lower shaft assembly/with lock pin/Yellow /Φ	1set	
15	099610004013	Rotated part housing assembly/left and right housing and a ring/light Grey/ABS/RLT5030S	1set	
16	099610004014	Spring/pedal level/Φ8.3XΦ1X10/RLT5003S	1pcs	
17	099610004015	Level/PA6+30GF/RLT5030S	1pcs	
18	099610004016	Trimming and edging lock/PA6+30GF/RLT5030S	1pcs	
19	099610004017	Rotated part/left and right/ABS/RLT5030S	1set	
20	099610004018	Spring/cutting head rotated release/Φ6.5XΦ	1pcs	
21	099610004019	Pedal cover/Black/ABS/RLT5030S	1pcs	
22	099610004020	EasyEdge pedal/Left and right part/Yellow/PA6+03GF/RLT5030S	1set	
23	099610004021	Left and right motor housing/light Grey/RLT5030S	1set	
24	099610004022	Rubber mat/motor hosing/RLT5030S	2pcs	
25	099610004602	Motor assembly/with helix cord and capacitance/RLT5003S	1set	
26	099610004023	bushing/rotor/RLT5030S	1pcs	
27	099610004603	Impeller assembly/Black/PA6+30GF/RLT5030S	1set	
28	099610004024	Nut/Impeller/M5	1pcs	
29	099610004604	Spool with nylon cutting line	1set	
30	099610004025	Spool cover/Black/PA6+30GF/RLT5030S	1pcs	
31	099610004026	Plant protector/steel/Gloss silver/RLT5030S	1pcs	
32	099610004605	Safety guard assembly/assembled with wheel and blade /Dark Grey/RLT5030S	1set	
33	099610004027	Screw/with washer/Safety guard/ST3.5X12/Black	4pcs	
34	099610004028	Cut-off blade	1pcs	
35	099610004029	Screw/rotated part housing/ST4X12/Black	1pcs	
36	099610004030	Screw/Rotated part/ST2.9X12/Black	1pcs	
37	099610004031	Cosmetic ring/Motor housing/Yellow/ABS/RLT5030S	1pcs	
38	099610004032	Nut/Aux handle support/M6	1pcs	
39	099610004606	Aux handle support assembly/with rubber mat/Dark Grey/RLT5030S	1set	
40	099610004033	Aux handle adjusting knob/with over mold/Yellow/RLT5030S	1pcs	



NOTES:

1. FOR ALL UNSPECIFIED LINEAR TOLERANCES PLEASE REFER TO TABLE.

2. SEE QUALITY ASSURANCE FOR ADDRESSING CRITICAL AND MAJOR INSPECTIONS:

TOTAL DIMENSIONS ON THIS PAGE = 0

TOTAL DIMENSIONS ON THIS PAGE = 0

099610006		RYOBI 12" LINE TRIMMER, 230V AC 500W/RLT5030S/SAA PLUG		AS PURCHASED	
PART NUMBER		DESCRIPTION		REMARKS	
M.S.		UNLESS OTHERWISE SPECIFIED DIMENSIONS ARE IN MILLIMETERS.		DATE	
P.S.		FOR ALL UNSPECIFIED DIMENSIONS PLEASE REFER TO THE CAD FILE.		DRAWN BY	
DIST		DO NOT SCALE. USE DIMENSIONS ONLY. DIMENSION & TOLERANCE PER ASME Y14.5M-1994		CHECKED BY	
"THIS DRAWING BELONGS TO TTI GROUP NORTH AMERICA. ITS CONTENTS ARE CONFIDENTIAL AND PROPRIETARY AND SHALL NOT BE DISCLOSED TO OR USED BY OR FOR OUTSIDE PARTIES WITHOUT TTI GROUP NORTH AMERICA'S WRITTEN CONSENT."		THIRD ANGLE PROJECTION		APPROVED BY	
				MATERIAL	
				NONE	
				DATE	
				04/22/10	
				TITLE	
				RYOBI 12" LINE TRIMMER, 230V AC 500W/RLT5030S/SAA PLUG	
				SIZE	
				4	
				DRAWING NUMBER	
				099610006	
				REV	
				01	
				SCALE	
				NONE	
				SHEET	
				1 OF 1	