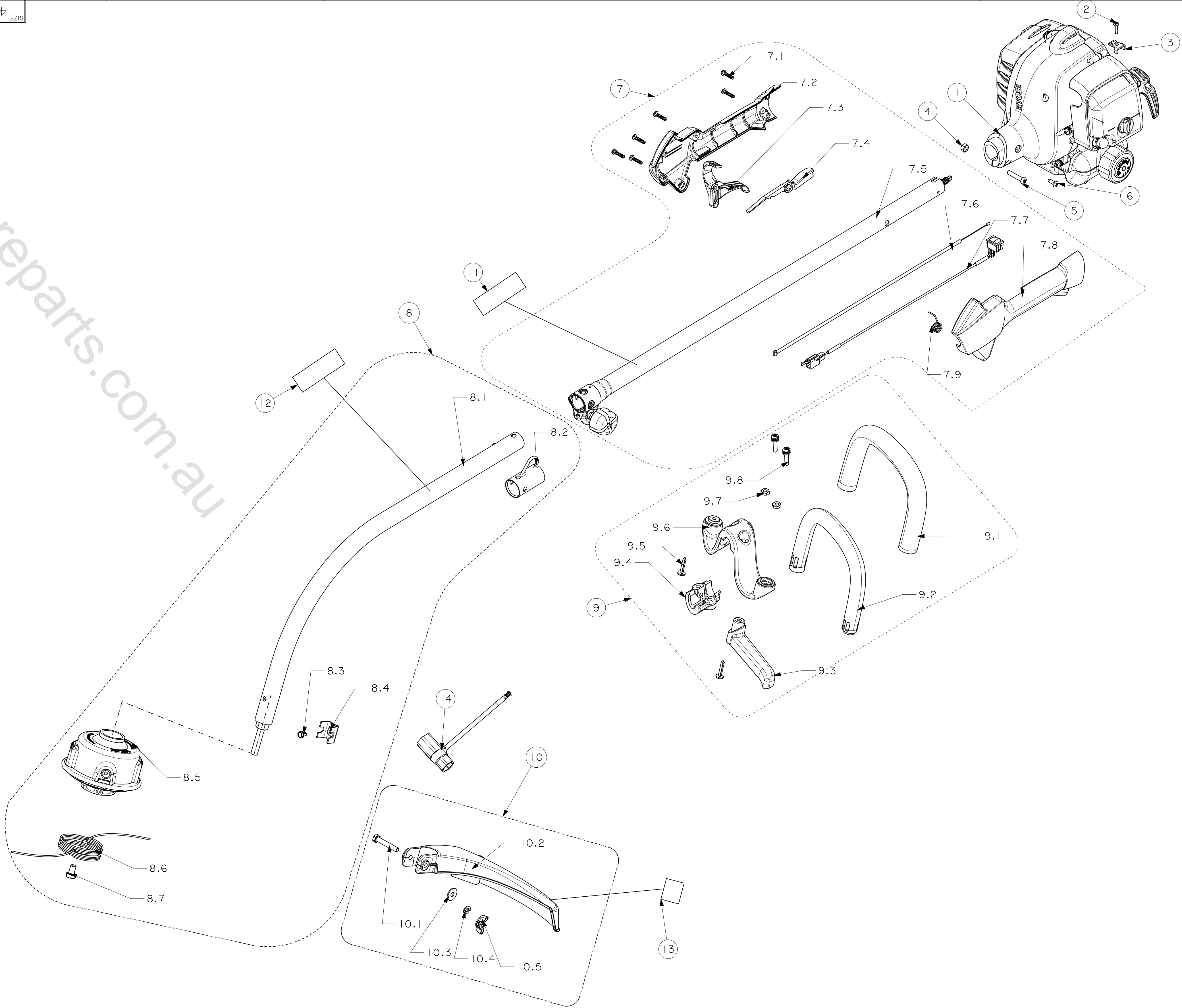


DRAWING NUMBER 090071004		SIZE 4
TOLERANCE FOR ASSEMBLY		
DIVISION DIMENSION	TOLERANCE (IT 12)	
-10	±0.08	
10-30	±0.11	
30-50	±0.13	
50-80	±0.15	
80-120	±0.18	
120-180	±0.20	
180-250	±0.23	
250-315	±0.26	
315-400	±0.29	
400-500	±0.32	
500-630	±0.35	
630-800	±0.40	
800-1000	±0.45	

REVISIONS				
REV	ZONE	DESCRIPTION	ECM	CHECKED
01		DESIGN RELEASE	XXXXXXXX	XXXXXXXXXXXX
COMPUTERIZED DOCUMENT NO MANUAL REVISIONS PERMITTED				

PRELIMINARY



PRELIMINARY

NOTES:

- (M) 1. REFER TO COMPONENT DRAWING FOR INSPECTION CRITERIA
2. SEE QUALITY ASSURANCE FOR ADDRESSING CRITICAL AND MAJOR DIMENSIONS
- TOTAL (C) THIS PAGE = 0
- TOTAL (M) THIS PAGE = 1

090071004		25.4cc RYOBI TRIMMER CURVE SPLIT BLK SHAFT		AS PURCHASED	
PART NUMBER		DESCRIPTION		REMARKS	
M.S.		UNLESS OTHERWISE SPECIFIED DIMENSIONS ARE IN MILLIMETERS.		DRAWN BY LB 10/25/10	
P.S.		FOR ALL UNSPECIFIED DIMENSIONS PLEASE REFER TO THE CAD FILE.		CHECKED BY LXR 10/25/10	
DIST		DO NOT SCALE. USE DIMENSIONS ONLY. DIMENSION & TOLERANCE PER ASME Y14.5-2009		APPROVED BY KW.MA 10/25/10	
THIS DRAWING BELONGS TO TTI GROUP NORTH AMERICA. ITS CONTENTS ARE CONFIDENTIAL AND PROPRIETARY AND SHALL NOT BE DISCLOSED TO OR USED BY OR FOR OUTSIDE PARTIES WITHOUT TTI GROUP NORTH AMERICA'S WRITTEN CONSENT.		THIRD ANGLE PROJECTION		MATERIAL SEE B.O.M	
				SIZE 4	DRAWING NUMBER 090071004
				SCALE NONE	REV 01
				SHEET 1 OF 1	