



SERVICE PARTS LIST

BULLETIN NO.
54-40-7020

SPECIFY CATALOG NO. AND SERIAL NO. WHEN ORDERING PARTS

CORDLESS CIRCULAR SAW

REVISED BULLETIN

DATE
May 2006

CATALOG NO. 0730-20

STARTING
SERIAL NO.

A57A

WIRING INSTRUCTION
SEE REVERSE SIDE

EXAMPLE:
00 0

Component Parts (Small #) Are Included
When Ordering The Assembly (Large #).

NOTE:

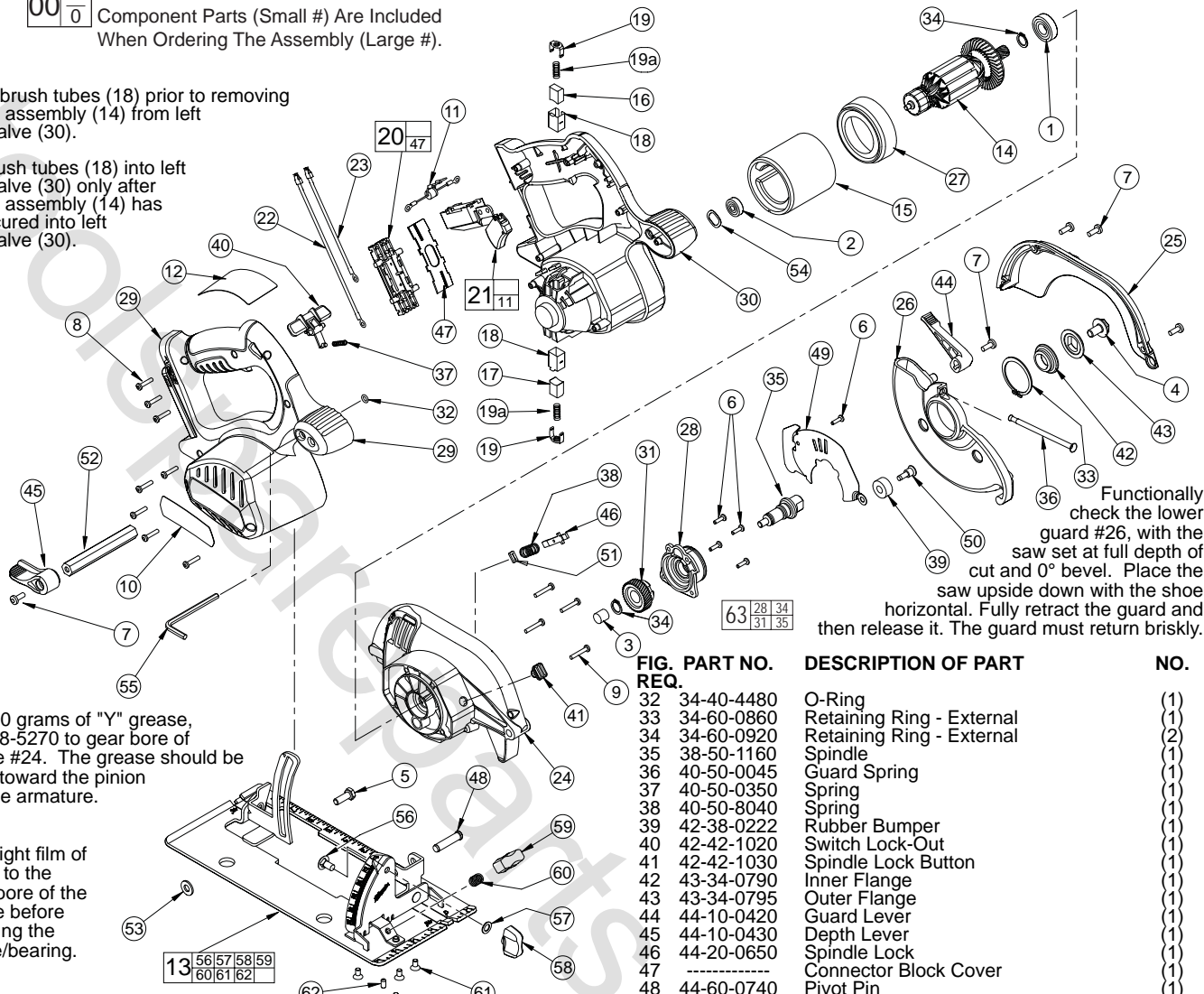
Remove brush tubes (18) prior to removing armature assembly (14) from left handle half (30).

Install brush tubes (18) into left handle half (30) only after armature assembly (14) has been secured into left handle half (30).

Apply 3.0 grams of "Y" grease, No. 49-08-5270 to gear bore of gearcase #24. The grease should be directed toward the pinion end of the armature.

Apply a light film of lubricant to the bearing bore of the gearcase before assembling the armature/bearing.

| FIG. | PART NO. | DESCRIPTION OF PART | NO. REQ. |
|------|------------|---------------------------------------|----------|
| 1 | 02-04-1212 | Ball Bearing | (1) |
| 2 | 02-04-5130 | Ball Bearing | (1) |
| 3 | 02-50-1640 | Needle Bearing | (1) |
| 4 | 06-75-1010 | Left Hand Screw | (1) |
| 5 | 06-75-5860 | 1/4-20 x 3/4 Screw | (1) |
| 6 | 06-82-5285 | 6-32 x .5 Pan Hd. Taptite Screw T-15 | (5) |
| 7 | 06-82-5314 | 10-24 x .5 Pan Hd. Taptite Screw T-25 | (5) |
| 8 | 06-82-7470 | 6-19 x .687 Plastite Torx Screw T-15 | (8) |
| 9 | 06-82-7475 | 6-19 x .875 Plastite Torx Screw T-15 | (4) |
| 10 | 10-20-2840 | Logo Label | (1) |
| 11 | 22-74-0510 | Diode Assembly | (1) |
| 12 | 12-20-3340 | Service Nameplate | (1) |
| 13 | 14-74-0310 | Shoe Assembly | (1) |
| 14 | 16-01-2125 | Armature | (1) |
| 15 | 18-01-2000 | Field | (1) |
| 16 | 22-18-1240 | Brush Assembly - Red | (1) |
| 17 | 22-18-1245 | Brush Assembly - Black | (1) |
| 18 | 22-20-0425 | Brush Tube | (2) |
| 19 | 22-32-0420 | Brush Spring Clip | (2) |
| 19a | 40-50-8745 | Brush Spring | (2) |
| 20 | 22-56-0975 | Connector Block Assembly | (1) |
| 21 | 23-66-1005 | Service Switch | (1) |
| 22 | 23-94-4290 | Leadwire Assembly - Red | (1) |
| 23 | 23-94-4295 | Leadwire Assembly - Black | (1) |
| 24 | 28-14-0746 | Gearcase | (1) |
| 25 | 28-20-1160 | Upper Guard Cover | (1) |
| 26 | 28-41-0955 | Lower Guard | (1) |
| 27 | 31-05-0350 | Baffle | (1) |
| 28 | 31-15-0601 | Gearcase Cover | (1) |
| 29 | 31-44-2040 | Right Handle Half | (1) |
| 30 | 31-44-2045 | Left Handle Half | (1) |
| 31 | 32-75-1310 | Spindle Gear | (1) |



Functionally check the lower guard #26, with the saw set at full depth of cut and 0° bevel. Place the saw upside down with the shoe horizontal. Fully retract the guard and then release it. The guard must return briskly.

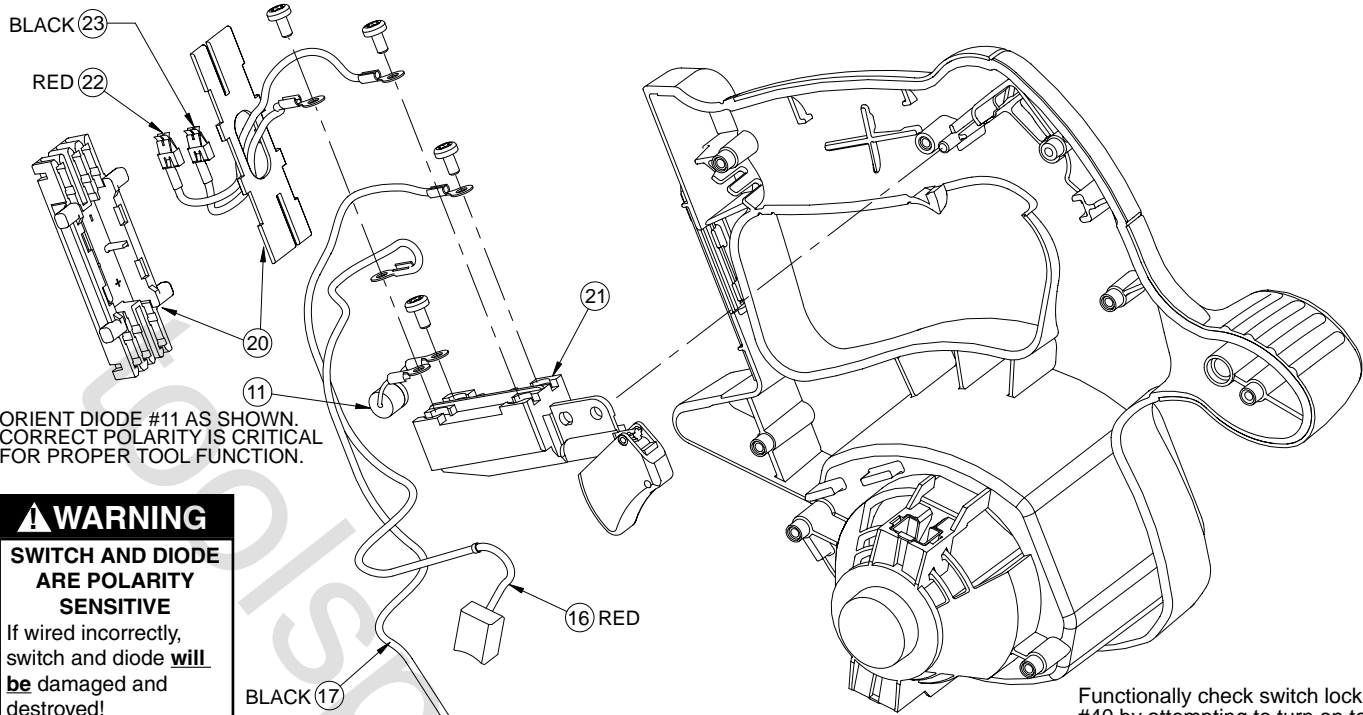
| FIG. | PART NO. | DESCRIPTION OF PART | NO. |
|------|------------|---------------------------------------|-----|
| | REQ. | | |
| 32 | 34-40-4480 | O-Ring | (1) |
| 33 | 34-60-0860 | Retaining Ring - External | (1) |
| 34 | 34-60-0920 | Retaining Ring - External | (2) |
| 35 | 38-50-1160 | Spindle | (1) |
| 36 | 40-50-0045 | Guard Spring | (1) |
| 37 | 40-50-0350 | Spring | (1) |
| 38 | 40-50-8040 | Spring | (1) |
| 39 | 42-38-0222 | Rubber Bumper | (1) |
| 40 | 42-42-1020 | Switch Lock-Out | (1) |
| 41 | 42-42-1030 | Spindle Lock Button | (1) |
| 42 | 43-34-0790 | Inner Flange | (1) |
| 43 | 43-34-0795 | Outer Flange | (1) |
| 44 | 44-10-0420 | Guard Lever | (1) |
| 45 | 44-10-0430 | Depth Lever | (1) |
| 46 | 44-20-0650 | Spindle Lock | (1) |
| 47 | ----- | Connector Block Cover | (1) |
| 48 | 44-60-0740 | Pivot Pin | (1) |
| 49 | 44-66-0560 | Retaining Plate | (1) |
| 50 | 45-04-0485 | Bumper Screw | (1) |
| 51 | 45-06-0720 | Felt Seal | (1) |
| 52 | 45-08-0395 | Depth Shaft | (1) |
| 53 | 45-88-1515 | Washer | (1) |
| 54 | 45-88-5615 | Wave Spring Washer | (1) |
| 55 | 49-96-0080 | 3/16 Hex Key | (1) |
| 56 | 06-10-0660 | 1/4-20 x 1/2 Short Neck Carriage Bolt | (1) |
| 57 | 45-88-1560 | Washer | (1) |
| 58 | 43-98-0730 | Bevel Adjustment Knob | (1) |
| 59 | 43-98-0720 | Rip Fence Knob | (1) |
| 60 | 40-50-0650 | Spring | (1) |
| 61 | 06-82-9605 | 10-32 x 3/8 CSK Machine Screw T-25 | (4) |
| 62 | 06-83-1600 | 10-32 x 3/8 Set Screw | (1) |
| ★ 63 | 14-46-2575 | Gear Service Assembly | (1) |
| | 49-22-1001 | Rip Fence (Not Shown) | (1) |

FIG. NOTE:

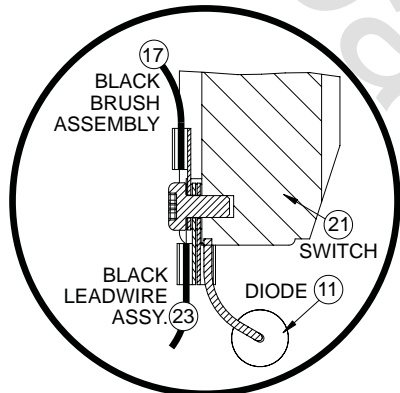
- 2 Orient the ball bearing so that the seal faces the commutator and the shield faces the shaft end.
- 3 Press needle bearing flush to .015 sub-flush in gearcase.
- 20,47 Concave side of connector block cover to face connector block.
- 26,33 Position retaining ring with rounded edge facing lower guard.

MILWAUKEE ELECTRIC TOOL CORPORATION

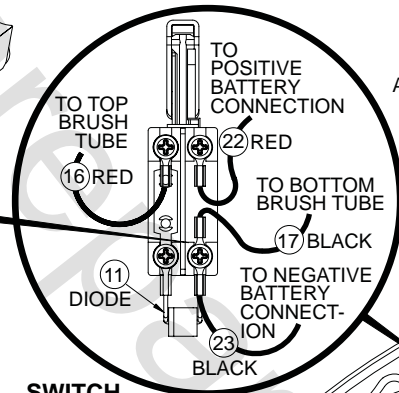
13135 W. LISBON RD., BROOKFIELD, WI 53005
Drwg. 6



⚠ WARNING
SWITCH AND DIODE
ARE POLARITY
SENSITIVE
 If wired incorrectly,
 switch and diode **will**
be damaged and
 destroyed!



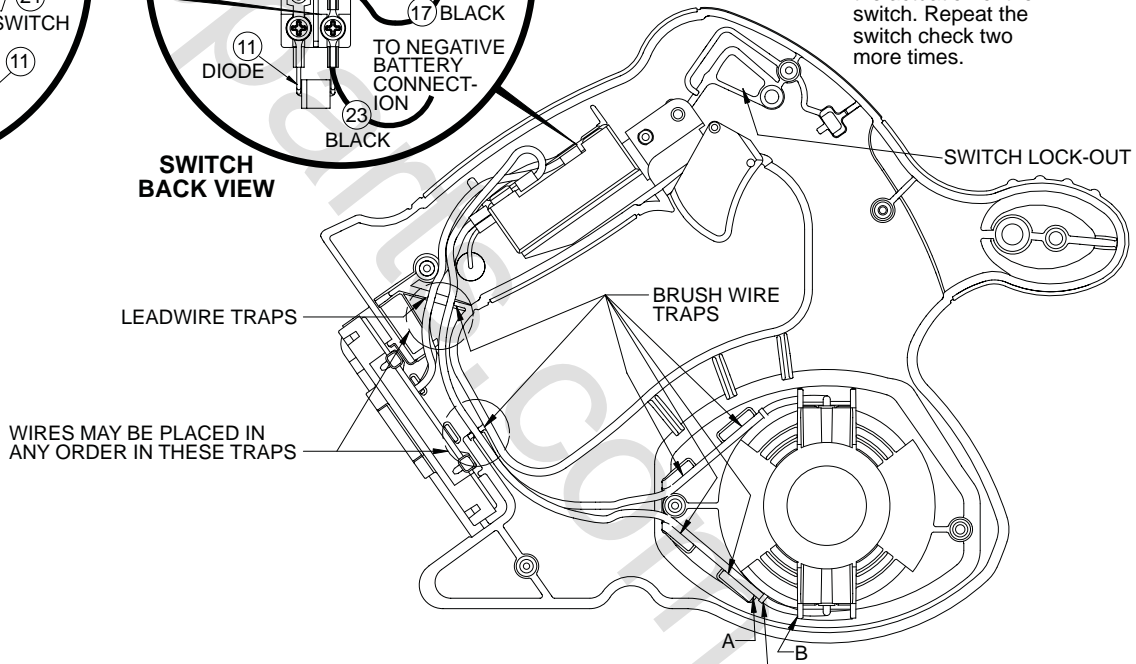
SWITCH DETAIL



SWITCH BACK VIEW

ALL TERMINALS
 MUST BE
 ORIENTED AS
 SHOWN IN
 THESE VIEWS.

Functionally check switch lock-out #40 by attempting to turn on tool by applying a reasonable amount of force, up to 8 lbs., to the switch trigger #21. The tool must not turn on. Release trigger. Actuate the lock-out lever and apply a reasonable amount of force to the switch trigger. The tool must turn on. While the trigger is still in the "ON" position, release the lock-out. Release the trigger. The tool must stop and the lock-out lever must again prevent the actuation of the switch. Repeat the switch check two more times.



TERMINALS MUST BE LOCATED
 BETWEEN 'A' AND 'B' FOR
 BOTH BRUSH ASSEMBLIES.

WIRING SPECIFICATIONS

| Wire No. | Wire Color | Origin or Gauge | Length | Terminals, Connectors and 1 or 2 End Wire Preparation |
|----------|------------|-----------------|--------|---|
| 16 | Red | 22-18-1240 | ----- | Carbon brush assembly. |
| 17 | Black | 22-18-1245 | ----- | Carbon brush assembly. |
| 22 | Red | 23-94-4290 | ----- | Leadwire assembly. |
| 23 | Black | 23-94-4295 | ----- | Leadwire assembly. |
| | | 22-74-0510 | ----- | Diode assembly. |

BULK LEAD WIRE - BULLETIN NO. 58-01-0003

TERMINAL DESCRIPTION

| Code | Part No. | Qty. |
|------|----------|------|
| | | |
| | | |
| | | |