



SERVICE PARTS LIST

BULLETIN NO.
54-26-7000

SPECIFY CATALOG NO. AND SERIAL NO. WHEN ORDERING PARTS			REVISED BULLETIN	DATE
CORDLESS 1/2" IMPACT WRENCH				Jan. 2007
CATALOG NO.	0779-20	STARTING SERIAL NO.	A58A	
			WIRING INSTRUCTION SEE REVERSE SIDE	

Slug placement is for both handle halves.

Replace the Gasket (37) whenever the tool is opened for servicing.

EXAMPLE:

00 0
Component Parts (Small #) Are Included When Ordering The Assembly (Large #).

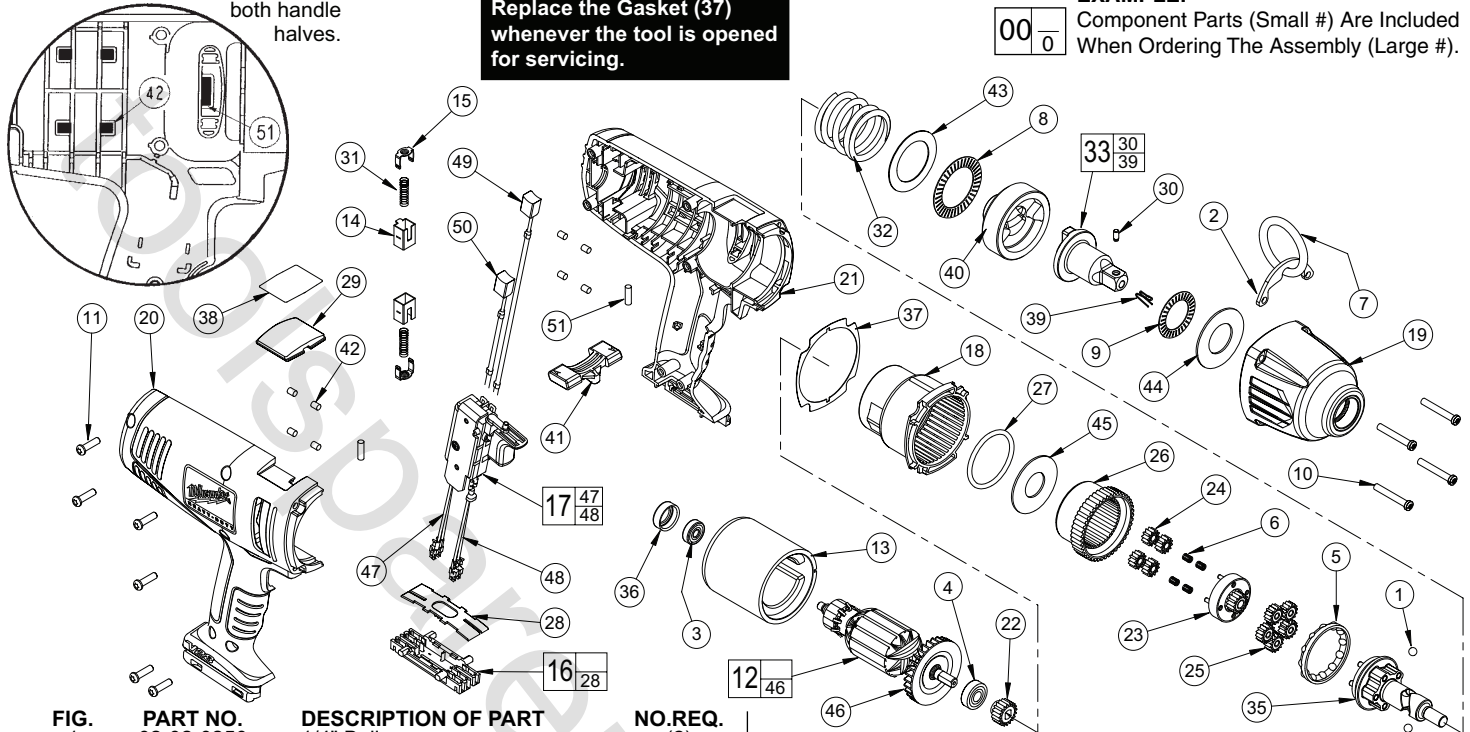


FIG.	PART NO.	DESCRIPTION OF PART
1	02-02-0250	1/4" Ball
2	43-72-0275	Tool Hanger
3	02-04-0645	Ball Bearing
4	02-04-0852	Ball Bearing
5	02-40-0050	Angular Contact Bearing
6	02-50-3260	Unit Cage Bearing
7	44-90-0095	Steel Ring
8	02-80-0200	Thrust Bearing
9	02-80-3256	Thrust Bearing
10	05-88-5988	K50 x 35mm Screw
11	06-95-6290	M5 x 2.24 x 18 Plastite Screw
12	16-01-2120	Armature
13	18-01-2120	Field
14	22-20-0425	Brush Tube
15	22-32-0420	Brush Spring Clip
16	22-56-0975	Connector Block Assembly
17	23-66-1779	Switch Assembly
18	28-14-0175	Gearcase
19	14-38-0100	Front Housing Assembly
20	31-44-0179	Right Handle
21	31-44-0779	Left Handle
22	32-60-0170	Sun Gear
23	32-60-0185	Sun Gear
24	32-62-0210	Planet Gear
25	32-62-0215	Planet Gear
26	32-65-0005	Ring Gear
27	34-40-0070	O-Ring
28		Connector Block Cover
29	31-01-0779	Label Plate
30	44-60-1170	Detent Pin
31	40-50-9079	Spring
32	40-50-0241	Spring
33	14-73-0145	Anvil Assembly
35	14-73-0300	Cam Shaft Assembly
36	42-96-0015	Bearing Cup
37	43-44-0991	Gasket
38	12-20-0779	Service Nameplate Kit
39	40-50-8320	Detent Spring
40	44-82-0205	Ram
41	45-24-0640	Reversing Shuttle
42	45-30-0021	Rubber Slug
43	45-88-0535	Washer
44	45-88-1575	Washer
45	45-88-3250	Washer
46	22-84-0375	Fan
47	23-94-0279	Leadwire Assembly-Black
48	23-94-0179	Leadwire Assembly-Red
49	22-18-2080	Brush Assembly-Red
50	22-18-1980	Brush Assembly-Black
51	45-30-0025	Rubber Slug

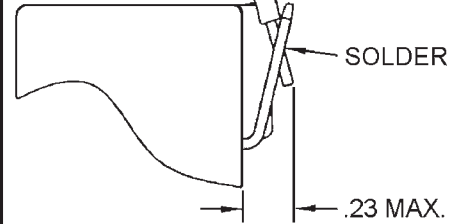
FIG.	NOTES:
3	Orient bearing seal (black side) toward the commutator.
10	Torque to 32-42 in./lbs.
11	Torque to 15-25 in./lbs.
12,14,21	Remove brush tubes prior to removing armature assembly from left handle half.
12,14,21	Install brush tubes into left handle half after armature assembly has been secured into that handle half.
16,28	Concave side of connector block cover to face connector block.
17,21	Ensure that the field is firmly seated on the locking groove on the left handle half prior to installing the right handle half. The field should not be able to rotate.
28	Concave side of connector block cover to face connector block.
49,50	At the time of brush replacement, the tool should be relubricated with Type "Z" Grease, No.49-08-7655.
FIG. 19,26,35,40	LUBRICATION (Type "Z" Grease, No.49-08-7655): Lightly coat with grease the Ring Gear (26) and the Camshaft Planet Carrier bearing races (35). Lightly coat with grease the back bearing surface of the Ram (40) and the I.D. of the Front Housing Bushing (19).
33	Place a dab of grease in the Needle Bearing inside the Anvil (33).
23,24,25,35	Fill with grease the center of the five Planet Gears (25) on the Camshaft Assembly (35). Fill the center of the four Planet Gears (24) on the Sun Gear (23).
40	Place approximately 1/4 oz. of grease in the front cavity of the Ram.
35	Place approximately 1/4 oz. grease on the Camshaft (35) inside the Spring (32).

MILWAUKEE ELECTRIC TOOL CORPORATION
13135 W. LISBON RD., BROOKFIELD, WI 53005

Drwg. 2

ROUTE THE RED BRUSH ASSEMBLY
LEADWIRE #49 THROUGH THE
WIRE TRAPS, AS SHOWN.

BRUSH ASSEMBLIES 49 AND 50
ARE TO BE SOLDERED TO
THE SWITCH,
AS SHOWN



CONNECT THE TERMINALS OF
LEADWIRE ASSEMBLIES 47 AND 48
TO THE TABS ON THE BOTTOM OF
THE SWITCH AND SOLDER.

ROUTE THE BLACK BRUSH
ASSEMBLY LEADWIRE #50 THROUGH
THE WIRE TRAPS, AS SHOWN.

⚠ WARNING

SWITCH POLARITY SENSITIVE

If wired incorrectly with connector
block #16, switch #17 **will be**
damaged and destroyed!

ROUTE THE LEADWIRES
BETWEEN THE POSTS.

THESE VIEWS OF THE
CONNECTOR BLOCK ASSEMBLY ARE
SHOWN WITHOUT THE CONNECTOR
BLOCK COVER FOR CLARITY.

WIRING SPECIFICATIONS				
Wire No.	Wire Color	Origin or Gauge	Length	Terminals, Connectors and 1 or 2 End Wire Preparation
47	Black	23-94-0279	----	Leadwire assembly - Black
48	Red	23-94-0179	----	Leadwire assembly - Red
49	Red	22-18-2080	----	Carbon brush assembly - Red
50	Black	22-18-1980	----	Carbon brush assembly - Black

BULK LEAD WIRE - BULLETIN NO. 58-01-0003

TERMINAL DESCRIPTION		
Code	Part No.	Qty.